

**NPFF Antibody (C-term)**  
**Affinity Purified Rabbit Polyclonal Antibody (Pab)**  
**Catalog # AP5251b****Specification**

---

**NPFF Antibody (C-term) - Product Information**

Application	FC, WB,E
Primary Accession	<a href="#">O15130</a>
Other Accession	<a href="#">O9WVA9</a> , <a href="#">O9WVA8</a> , <a href="#">O9TUX7</a>
Reactivity	Human
Predicted	Bovine, Mouse, Rat
Host	Rabbit
Clonality	Polyclonal
Isotype	Rabbit IgG
Antigen Region	86-113

**NPFF Antibody (C-term) - Additional Information****Gene ID** 8620**Other Names**

Pro-FMRFamide-related neuropeptide FF, FMRFamide-related peptides, Neuropeptide SF, NPSF, Neuropeptide FF, NPFF, Neuropeptide AF, NPAF, NPFF

**Target/Specificity**

This NPFF antibody is generated from rabbits immunized with a KLH conjugated synthetic peptide between 86-113 amino acids from the C-terminal region of human NPFF.

**Dilution**

FC~~1:10~50

WB~~1:1000

E~~Use at an assay dependent concentration.

**Format**

Purified polyclonal antibody supplied in PBS with 0.09% (W/V) sodium azide. This antibody is purified through a protein A column, followed by peptide affinity purification.

**Storage**

Maintain refrigerated at 2-8°C for up to 2 weeks. For long term storage store at -20°C in small aliquots to prevent freeze-thaw cycles.

**Precautions**

NPFF Antibody (C-term) is for research use only and not for use in diagnostic or therapeutic procedures.

**NPFF Antibody (C-term) - Protein Information****Name** NPFF ([HGNC:7901](#))

**Function** Morphine modulating peptides. Have wide-ranging physiologic effects, including the modulation of morphine-induced analgesia, elevation of arterial blood pressure, and increased somatostatin secretion from the pancreas. Neuropeptide FF potentiates and sensitizes ASIC1 and ASIC3 channels.

**Cellular Location**

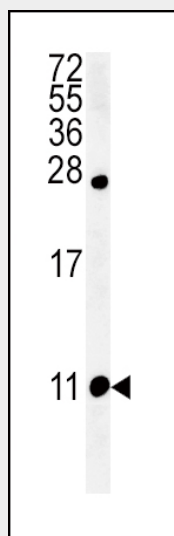
Secreted.

**NPFF Antibody (C-term) - Protocols**

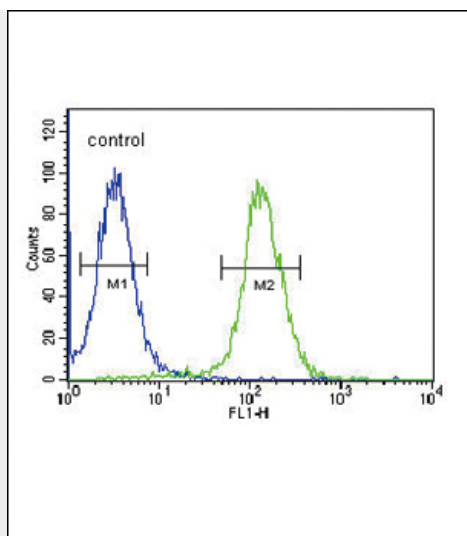
Provided below are standard protocols that you may find useful for product applications.

- [Western Blot](#)
- [Blocking Peptides](#)
- [Dot Blot](#)
- [Immunohistochemistry](#)
- [Immunofluorescence](#)
- [Immunoprecipitation](#)
- [Flow Cytometry](#)
- [Cell Culture](#)

**NPFF Antibody (C-term) - Images**



Western blot analysis of NPFF Antibody (C-term) (Cat. #AP5251b) in 293 cell line lysates (35ug/lane). NPFF (arrow) was detected using the purified Pab.



NPFF Antibody (C-term) (Cat. #AP5251b) flow cytometric analysis of 293 cells (right histogram) compared to a negative control (left histogram). FITC-conjugated goat-anti-rabbit secondary antibodies were used for the analysis.

#### **NPFF Antibody (C-term) - Background**

FMFRamide-related protein precursor plays a role in the regulation of heart rate and blood pressure and the modulation of morphine-induced antinociception. FMRFAL encodes a preproprotein which is cleaved to form two active peptides with similar function.

#### **NPFF Antibody (C-term) - References**

- Yang, H.Y., et al. *Neuropeptides* 42(1):1-18(2008)
- Roumy, M., et al. *J. Biol. Chem.* 282(11):8332-8342(2007)
- Anko, M.L., et al. *J. Neurochem.* 96(2):573-584(2006)