

**p70 S6 Kinase  $\beta$  (Phospho-Ser423) Antibody**  
**Purified Rabbit Polyclonal Antibody (Pab)**  
**Catalog # AP52521**

**Specification**

---

**p70 S6 Kinase  $\beta$  (Phospho-Ser423) Antibody - Product Information**

Application	WB
Primary Accession	<a href="#">O9UBS0</a>
Reactivity	Human
Host	Rabbit
Clonality	Polyclonal
Calculated MW	53455

**p70 S6 Kinase  $\beta$  (Phospho-Ser423) Antibody - Additional Information**

**Gene ID** 6199

**Other Names**

Ribosomal protein S6 kinase beta-2, S6K-beta-2, S6K2, 70 kDa ribosomal protein S6 kinase 2, P70S6K2, p70-S6K 2, S6 kinase-related kinase, SRK, Serine/threonine-protein kinase 14B, p70 ribosomal S6 kinase beta, S6K-beta, p70 S6 kinase beta, p70 S6K-beta, p70 S6KB, p70-beta, RPS6KB2, STK14B

**Dilution**

WB~~1:1000

**Format**

Rabbit IgG in phosphate buffered saline (without Mg<sup>2+</sup> and Ca<sup>2+</sup>), pH 7.4, 150mM NaCl, 0.09% (W/V) sodium azide and 50% glycerol.

**Storage Conditions**

-20°C

**p70 S6 Kinase  $\beta$  (Phospho-Ser423) Antibody - Protein Information**

**Name** RPS6KB2

**Synonyms** STK14B

**Function**

Phosphorylates specifically ribosomal protein S6 (PubMed:<a href="http://www.uniprot.org/citations/29750193" target="\_blank">29750193</a>). Seems to act downstream of mTOR signaling in response to growth factors and nutrients to promote cell proliferation, cell growth and cell cycle progression in an alternative pathway regulated by MEAK7 (PubMed:<a href="http://www.uniprot.org/citations/29750193" target="\_blank">29750193</a>).

**Cellular Location**

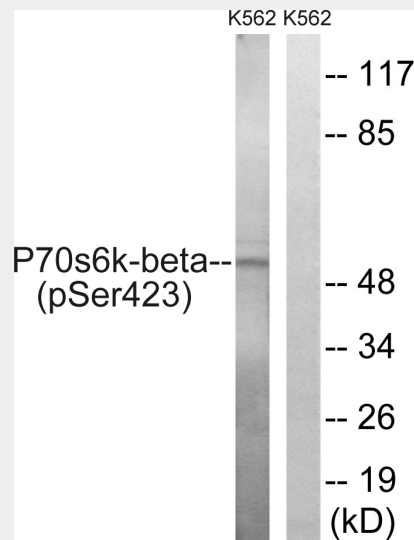
Cytoplasm. Nucleus.

## p70 S6 Kinase $\beta$ (Phospho-Ser423) Antibody - Protocols

Provided below are standard protocols that you may find useful for product applications.

- [Western Blot](#)
- [Blocking Peptides](#)
- [Dot Blot](#)
- [Immunohistochemistry](#)
- [Immunofluorescence](#)
- [Immunoprecipitation](#)
- [Flow Cytometry](#)
- [Cell Culture](#)

## p70 S6 Kinase $\beta$ (Phospho-Ser423) Antibody - Images



Western blot analysis of extracts from K562 cells, treated with EGF (200ng/ml, 5mins), using p70 S6 Kinase  $\beta$  (Phospho-Ser423) antibody.

## p70 S6 Kinase $\beta$ (Phospho-Ser423) Antibody - Background

Phosphorylates specifically ribosomal protein S6.

## p70 S6 Kinase $\beta$ (Phospho-Ser423) Antibody - References

- Gout I., et al. J. Biol. Chem. 273:30061-30064(1998).  
Saitoh M., et al. Biochem. Biophys. Res. Commun. 253:470-476(1998).  
Lee-Fruman K.K., et al. Oncogene 18:5108-5114(1999).  
Koh H.J., et al. Submitted (OCT-1998) to the EMBL/GenBank/DDBJ databases.  
Ota T., et al. Nat. Genet. 36:40-45(2004).