

RPA43 Antibody (C-term)
Affinity Purified Rabbit Polyclonal Antibody (Pab)
Catalog # AP5260b

Specification

RPA43 Antibody (C-term) - Product Information

Application	IHC-P, WB,E
Primary Accession	Q3B726
Reactivity	Human
Host	Rabbit
Clonality	Polyclonal
Isotype	Rabbit IgG
Calculated MW	37432
Antigen Region	298-326

RPA43 Antibody (C-term) - Additional Information

Gene ID 221830

Other Names

DNA-directed RNA polymerase I subunit RPA43, Twist neighbor protein, TWISTNB

Target/Specificity

This RPA43 antibody is generated from rabbits immunized with a KLH conjugated synthetic peptide between 298-326 amino acids from the C-terminal region of human RPA43.

Dilution

IHC-P~~1:50~100

WB~~1:1000

E~~Use at an assay dependent concentration.

Format

Purified polyclonal antibody supplied in PBS with 0.09% (W/V) sodium azide. This antibody is purified through a protein A column, followed by peptide affinity purification.

Storage

Maintain refrigerated at 2-8°C for up to 2 weeks. For long term storage store at -20°C in small aliquots to prevent freeze-thaw cycles.

Precautions

RPA43 Antibody (C-term) is for research use only and not for use in diagnostic or therapeutic procedures.

RPA43 Antibody (C-term) - Protein Information

Name POLR1F ([HGNC:18027](#))

Function Component of RNA polymerase I (Pol I), a DNA-dependent RNA polymerase which

synthesizes ribosomal RNA precursors using the four ribonucleoside triphosphates as substrates. Through its association with RRN3/TIF-IA may be involved in recruitment of Pol I to rDNA promoters.

Cellular Location

Nucleus, nucleolus.

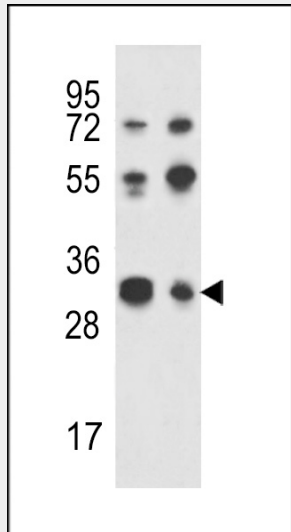
Tissue Location

Widely expressed. Expressed in all fetal and adult tissues tested, with highest expression in fetal lung, liver, and kidney, and low expression in all adult tissues

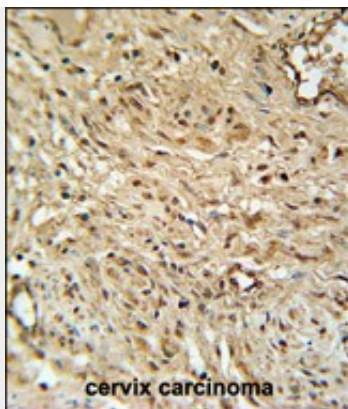
RPA43 Antibody (C-term) - Protocols

Provided below are standard protocols that you may find useful for product applications.

- [Western Blot](#)
- [Blocking Peptides](#)
- [Dot Blot](#)
- [Immunohistochemistry](#)
- [Immunofluorescence](#)
- [Immunoprecipitation](#)
- [Flow Cytometry](#)
- [Cell Culture](#)

RPA43 Antibody (C-term) - Images

Western blot analysis of RPA43 Antibody (C-term) (Cat. #AP5260b) in Jurkat, K562 cell line lysates (35ug/lane). RPA43 (arrow) was detected using the purified Pab.



RPA43 Antibody (C-term) (Cat. #AP5260b) immunohistochemistry analysis in formalin fixed and paraffin embedded human cervix carcinoma followed by peroxidase conjugation of the secondary antibody and DAB staining. This data demonstrates the use of the RPA43 Antibody (C-term) for immunohistochemistry. Clinical relevance has not been evaluated.

RPA43 Antibody (C-term) - Background

RPA43 is DNA-dependent RNA polymerase catalyzes the transcription of DNA into RNA using the four ribonucleoside triphosphates as substrates. It is component of RNA polymerase I which synthesizes ribosomal RNA precursors. Through its association with RRN3/TIF-IA may be involved in recruitment of Pol I to rDNA promoters.

RPA43 Antibody (C-term) - References

Olsen, J.V., et al. Cell 127(3):635-648(2006)
Yuan, X., et al. EMBO Rep. 3(11):1082-1087(2002)
Kosan, C., et al. Cytogenet. Genome Res. 97 (3-4), 167-170 (2002)