

KLF4 Antibody
Purified Mouse Monoclonal Antibody (Mab)
Catalog # AP52656**Specification**

KLF4 Antibody - Product Information

Application	WB
Primary Accession	O43474
Reactivity	Transfected
Host	Mouse
Clonality	Monoclonal
Isotype	IgG2b
Calculated MW	55/65 KDa

KLF4 Antibody - Additional Information**Gene ID** 9314**Other Names**

Endothelial Kruppel like zinc finger protein;Epithelial zinc finger protein
EZf;EZf;GKLF;Gut-enriched krueppel-like factor;KLF;KLF4;KLF4_HUMAN;Krueppel-like factor
4;Kruppel like factor 4 (Epithelial zinc finger protein EZf) (Gut enriched Krueppel like
factor);Kruppel like factor 4 (gut).

Dilution

WB~~1:1000

Format

ascites

Storage

Store at -20 °C.Stable for 12 months from date of receipt

KLF4 Antibody - Protein Information**Name** KLF4 ([HGNC:6348](#))**Synonyms** EZF, GKLF**Function**

Transcription factor; can act both as activator and as repressor. Binds the 5'-CACCC-3' core sequence. Binds to the promoter region of its own gene and can activate its own transcription. Regulates the expression of key transcription factors during embryonic development. Plays an important role in maintaining embryonic stem cells, and in preventing their differentiation. Required for establishing the barrier function of the skin and for postnatal maturation and maintenance of the ocular surface. Involved in the differentiation of epithelial cells and may also function in skeletal and kidney development. Contributes to the down-regulation of p53/TP53 transcription.

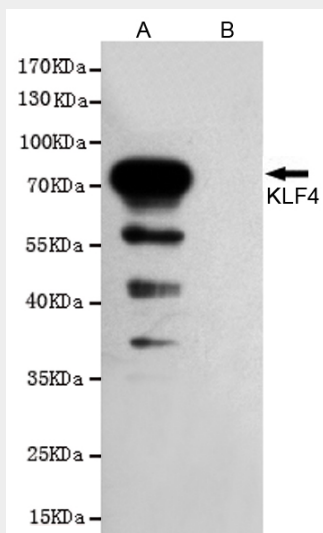
Cellular Location

Nucleus {ECO:0000250|UniProtKB:Q60793}. Cytoplasm {ECO:0000250|UniProtKB:Q60793}

KLF4 Antibody - Protocols

Provided below are standard protocols that you may find useful for product applications.

- [Western Blot](#)
- [Blocking Peptides](#)
- [Dot Blot](#)
- [Immunohistochemistry](#)
- [Immunofluorescence](#)
- [Immunoprecipitation](#)
- [Flow Cytometry](#)
- [Cell Culture](#)

KLF4 Antibody - Images

Western blot analysis of extracts from CHO-K1 cells, transfected with pcDNA3.1-Hygro(+)-mKLF4-Flag construct (A) or transfected with pDNA3.1-Hygro(+)-Flag vector (B), using KLF4 mouse mAb (1:1000 diluted). Predicted band size: 55/65 kDa. Observed band size: 55/65 kDa.

KLF4 Antibody - Background

Transcription factor; can act both as activator and as repressor. Binds the 5'-CACCC-3' core sequence. Binds to the promoter region of its own gene and can activate its own transcription. Regulates the expression of key transcription factors during embryonic development. Plays an important role in maintaining embryonic stem cells, and in preventing their differentiation. Required for establishing the barrier function of the skin and for postnatal maturation and maintenance of the ocular surface. Involved in the differentiation of epithelial cells and may also function in skeletal and kidney development. Contributes to the down-regulation of p53/TP53 transcription.

KLF4 Antibody - References

Yet S.-F., et al. J. Biol. Chem. 273:1026-1031 (1998).
Foster K.W., et al. Cell Growth Differ. 10:423-434 (1999).

Camacho-Vanegas O.,et al.FASEB J. 27:432-436(2013).

Garrett-Sinha L.A.,et al.Submitted (SEP-1996) to the EMBL/GenBank/DDBJ databases.

Ota T.,et al.Nat. Genet. 36:40-45(2004).