

SLC25A19 Antibody (C-term)
Affinity Purified Rabbit Polyclonal Antibody (Pab)
Catalog # AP5269b

Specification

SLC25A19 Antibody (C-term) - Product Information

Application	WB,E
Primary Accession	Q9HC21
Other Accession	Q5IS35
Reactivity	Human, Mouse
Predicted	Monkey
Host	Rabbit
Clonality	Polyclonal
Isotype	Rabbit IgG
Calculated MW	35511
Antigen Region	236-263

SLC25A19 Antibody (C-term) - Additional Information

Gene ID 60386

Other Names

Mitochondrial thiamine pyrophosphate carrier, Mitochondrial uncoupling protein 1, Solute carrier family 25 member 19, SLC25A19, DNC, MUP1

Target/Specificity

This SLC25A19 antibody is generated from rabbits immunized with a KLH conjugated synthetic peptide between 236-263 amino acids from the C-terminal region of human SLC25A19.

Dilution

WB~~1:1000

E~~Use at an assay dependent concentration.

Format

Purified polyclonal antibody supplied in PBS with 0.09% (W/V) sodium azide. This antibody is purified through a protein A column, followed by peptide affinity purification.

Storage

Maintain refrigerated at 2-8°C for up to 2 weeks. For long term storage store at -20°C in small aliquots to prevent freeze-thaw cycles.

Precautions

SLC25A19 Antibody (C-term) is for research use only and not for use in diagnostic or therapeutic procedures.

SLC25A19 Antibody (C-term) - Protein Information

Name SLC25A19 ([HGNC:14409](#))

Function Mitochondrial transporter mediating uptake of thiamine diphosphate into mitochondria. It is not clear if the antiporter activity is affected by the membrane potential or by the proton electrochemical gradient.

Cellular Location

Mitochondrion membrane; Multi-pass membrane protein

Tissue Location

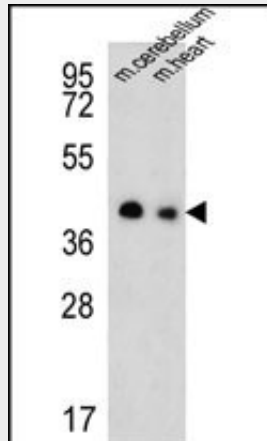
Expressed in all tissues examined except for placenta. Highest levels in colon, kidney, lung, testis, spleen, and brain.

SLC25A19 Antibody (C-term) - Protocols

Provided below are standard protocols that you may find useful for product applications.

- [Western Blot](#)
- [Blocking Peptides](#)
- [Dot Blot](#)
- [Immunohistochemistry](#)
- [Immunofluorescence](#)
- [Immunoprecipitation](#)
- [Flow Cytometry](#)
- [Cell Culture](#)

SLC25A19 Antibody (C-term) - Images



Western blot analysis of SLC25A19 Antibody (C-term) (Cat. #AP5269b) in mouse cerebellum, heart tissue lysates (35ug/lane). SLC25A19 (arrow) was detected using the purified Pab.

SLC25A19 Antibody (C-term) - Background

SLC25A19 encodes a mitochondrial protein that is a member of the solute carrier family. Although this protein was initially thought to be the mitochondrial deoxynucleotide carrier involved in the uptake of deoxynucleotides into the matrix of the mitochondria, further studies have demonstrated that this protein instead functions as the mitochondrial thiamine pyrophosphate carrier, which transports thiamine pyrophosphates into mitochondria.

SLC25A19 Antibody (C-term) - References

Spiegel, R., et al. Ann. Neurol. 66(3):419-424(2009)

Kang, J., et al. Mitochondrion 8(2):103-108(2008)

Lindhurst, M.J., et al. Proc. Natl. Acad. Sci. U.S.A. 103(43):15927-15932(2006)

SLC25A19 Antibody (C-term) - Citations

- [Developmental maturation of the colonic uptake process of the microbiota-generated thiamin pyrophosphate](#)
- [Adaptive-regulation of pancreatic acinar mitochondrial thiamin pyrophosphate uptake process: Possible involvement of epigenetic mechanism\(s\).](#)