

**SAFB1 Antibody**  
**Purified Mouse Monoclonal Antibody (Mab)**  
**Catalog # AP52732****Specification**

---

**SAFB1 Antibody - Product Information**

Application	WB, ICC
Primary Accession	<a href="#">Q15424</a>
Reactivity	Human
Host	Mouse
Clonality	Monoclonal
Isotype	IgG1
Calculated MW	130 KDa

**SAFB1 Antibody - Additional Information****Gene ID** 6294**Other Names**

DKFZp779C1727;glutathione S transferase fusion protein;HAP;HET;HSP27 ERE TATA binding protein;HSP27 ERE-TATA-binding protein;HSP27 estrogen response element-TATA box-binding protein;SAF B;SAF-B1;SAFB 1;SAFB;SAFB1;SAFB1\_HUMAN;scaffold attachment factor B1.

**Dilution**

WB~~1:1000

ICC~~1:200

**Format**

Purified mouse monoclonal antibody in buffer containing 0.1M Tris-Glycine (pH 7.4, 150 mM NaCl) with 0.09% (W/V) sodium azide, 50%,glycerol

**Storage**

Store at -20 °C.Stable for 12 months from date of receipt

**SAFB1 Antibody - Protein Information****Name** SAFB**Synonyms** HAP, HET, SAFB1**Function**

Binds to scaffold/matrix attachment region (S/MAR) DNA and forms a molecular assembly point to allow the formation of a 'transcriptosomal' complex (consisting of SR proteins and RNA polymerase II) coupling transcription and RNA processing (PubMed:<a href="http://www.uniprot.org/citations/9671816" target="\_blank">9671816</a>). Functions as an estrogen receptor corepressor and can also bind to the HSP27 promoter and decrease its transcription (PubMed:<a href="http://www.uniprot.org/citations/12660241" target="\_blank">12660241</a>). Thereby acts as a negative regulator of cell proliferation

(PubMed:<a href="http://www.uniprot.org/citations/12660241" target="\_blank">12660241</a>). When associated with RBMX, binds to and stimulates transcription from the SREBF1 promoter (By similarity).

#### **Cellular Location**

Nucleus

#### **Tissue Location**

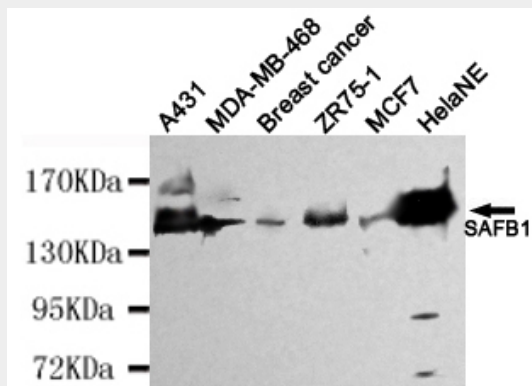
Ubiquitous. Expressed at high levels in the CNS and at low levels in the liver. Expressed in a wide number of breast cancer cell lines

#### **SAFB1 Antibody - Protocols**

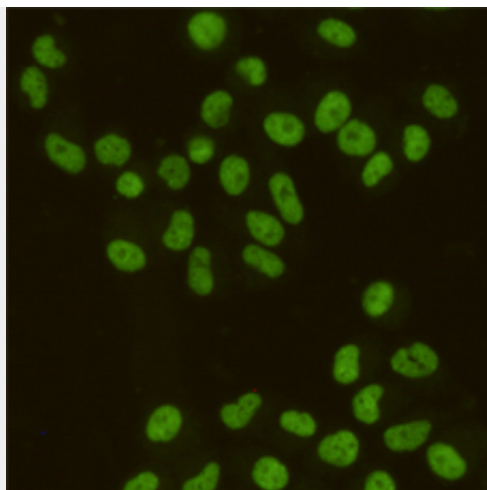
Provided below are standard protocols that you may find useful for product applications.

- [Western Blot](#)
- [Blocking Peptides](#)
- [Dot Blot](#)
- [Immunohistochemistry](#)
- [Immunofluorescence](#)
- [Immunoprecipitation](#)
- [Flow Cytometry](#)
- [Cell Culture](#)

#### **SAFB1 Antibody - Images**



Western blot detection of SAFB1 in HeLaNE, A431, MDA-MB-468, Breast cancer, ZR75-1 and MCF7 cell lysates using SAFB1 mouse mAb (1:4000 diluted). Predicted band size: 130kDa. Observed band size: 130kDa.



Immunocytochemistry staining of HeLa cells fixed with 4% Paraformaldehyde and using SAFB1 mouse mAb (dilution 1:200).

### **SAFB1 Antibody - Background**

Binds to scaffold/matrix attachment region (S/MAR) DNA and forms a molecular assembly point to allow the formation of a 'transcriptosomal' complex (consisting of SR proteins and RNA polymerase II) coupling transcription and RNA processing (By similarity). Can function as an estrogen receptor corepressor and can also bind to the HSP27 promoter and decrease its transcription. When associated with RBMX, binds to and stimulates transcription from the SREBF1 promoter (By similarity). Can inhibit cell proliferation.

### **SAFB1 Antibody - References**

Oesterreich S.,et al.J. Cell. Biochem. 67:275-286(1997).  
Ota T.,et al.Nat. Genet. 36:40-45(2004).  
Grimwood J.,et al.Nature 428:529-535(2004).  
Totoki Y.,et al.Submitted (MAR-2005) to the EMBL/GenBank/DDBJ databases.  
Bienvenut W.V.,et al.Submitted (JUL-2009) to UniProtKB.