

SPG16 Antibody (Center)
Affinity Purified Rabbit Polyclonal Antibody (Pab)
Catalog # AP5274c

Specification

SPG16 Antibody (Center) - Product Information

Application	IHC-P,E
Primary Accession	Q8N0X2
Reactivity	Human, Mouse
Host	Rabbit
Clonality	Polyclonal
Isotype	Rabbit IgG
Calculated MW	70818
Antigen Region	276-304

SPG16 Antibody (Center) - Additional Information

Gene ID 79582

Other Names

Sperm-associated antigen 16 protein, Pf20 protein homolog, SPAG16, PF20

Target/Specificity

This SPG16 antibody is generated from rabbits immunized with a KLH conjugated synthetic peptide between 276-304 amino acids from the Central region of human SPG16.

Dilution

IHC-P~~1:50~100

E~~Use at an assay dependent concentration.

Format

Purified polyclonal antibody supplied in PBS with 0.09% (W/V) sodium azide. This antibody is purified through a protein A column, followed by peptide affinity purification.

Storage

Maintain refrigerated at 2-8°C for up to 2 weeks. For long term storage store at -20°C in small aliquots to prevent freeze-thaw cycles.

Precautions

SPG16 Antibody (Center) is for research use only and not for use in diagnostic or therapeutic procedures.

SPG16 Antibody (Center) - Protein Information

Name SPAG16

Synonyms PF20

Function Necessary for sperm flagellar function. Plays a role in motile ciliogenesis. May help to recruit STK36 to the cilium or apical surface of the cell to initiate subsequent steps of construction of the central pair apparatus of motile cilia (By similarity).

Cellular Location

Cytoplasm {ECO:0000250|UniProtKB:Q8K450}. Cytoplasm, cytoskeleton, flagellum axoneme {ECO:0000250|UniProtKB:Q8K450}. Cytoplasm, cytoskeleton, cilium axoneme {ECO:0000250|UniProtKB:Q8K450}. Cell projection, cilium, flagellum {ECO:0000250|UniProtKB:Q8K450}. Note=Detected on the sperm flagellum axoneme. Detected in the central apparatus of the axoneme. Colocalizes with SPAG6 on microtubules (By similarity) {ECO:0000250|UniProtKB:Q8K450}

Tissue Location

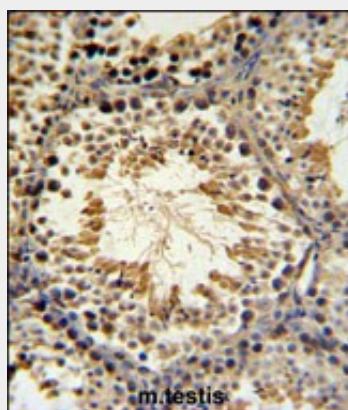
Isoform 1 is detected in testis. Isoform 4 is detected in testis and brain, and at lower levels in kidney, heart, pancreas, thyroid, ovary, adrenal gland, spinal cord, trachea and liver.

SPG16 Antibody (Center) - Protocols

Provided below are standard protocols that you may find useful for product applications.

- [Western Blot](#)
- [Blocking Peptides](#)
- [Dot Blot](#)
- [Immunohistochemistry](#)
- [Immunofluorescence](#)
- [Immunoprecipitation](#)
- [Flow Cytometry](#)
- [Cell Culture](#)

SPG16 Antibody (Center) - Images



SPG16 Antibody (Center) (Cat. #AP5274c) IHC analysis in formalin fixed and paraffin embedded mouse testis tissue followed by peroxidase conjugation of the secondary antibody and DAB staining. This data demonstrates the use of the SPG16 Antibody (Center) for immunohistochemistry. Clinical relevance has not been evaluated.

SPG16 Antibody (Center) - Background

Cilia and flagella are comprised of a microtubular backbone, the axoneme, which is organized by the basal body and surrounded by plasma membrane. SPAG16 encodes 2 major proteins that associate with the axoneme of sperm tail and the nucleus of postmeiotic germ cells, respectively.

SPG16 Antibody (Center) - References

Zhang, Z., et al. Biol. Reprod. 77(5):864-871(2007)
Zhang, Z., et al. Mol. Cell. Biol. 22(22):7993-8004(2002)
Pennarun, G., et al. Am. J. Respir. Cell Mol. Biol. 26(3):362-370(2002)