

SWAP70 Antibody
Purified Mouse Monoclonal Antibody (Mab)
Catalog # AP52767**Specification**

SWAP70 Antibody - Product Information

Application	WB, IP
Primary Accession	Q9UH65
Reactivity	Human, Mouse
Host	Mouse
Clonality	Monoclonal
Isotype	IgG2b
Calculated MW	70 KDa

SWAP70 Antibody - Additional Information**Gene ID** 23075**Other Names**

KIAA0640;70kDa;AV235546;FLJ39540;HSPC321;SWA 70 protein;SWAP 70;SWAP switching B-cell complex 70kDa subunit;SWAP-70;SWAP70;Switch associated protein 70;Switch-associated protein 70;SWP70_HUMAN.

Dilution

WB~~1:1000

IP~~1:500

Format

Ascites

Storage

Store at -20 °C.Stable for 12 months from date of receipt

SWAP70 Antibody - Protein Information**Name** SWAP70**Synonyms** KIAA0640**Function**

Phosphatidylinositol 3,4,5-trisphosphate-dependent guanine nucleotide exchange factor (GEF) which, independently of RAS, transduces signals from tyrosine kinase receptors to RAC. It also mediates signaling of membrane ruffling. Regulates the actin cytoskeleton as an effector or adapter protein in response to agonist stimulated phosphatidylinositol (3,4)-bisphosphate production and cell protrusion (By similarity).

Cellular Location

Cytoplasm. Cell membrane. Nucleus. Cell projection, lamellipodium. Cytoplasm, cytoskeleton.

Note=In resting B-cells it is localized mainly in the cytoplasm and upon cell activation it is recruited to the plasma membrane and then translocates to the nucleus (PubMed:10681448) In activated, class-switching B-cells it is associated with membrane IgG but not IgM (PubMed:10681448). Localized to loose actin filament arrays located behind actively extending lamellipodia (PubMed:12925760).

Tissue Location

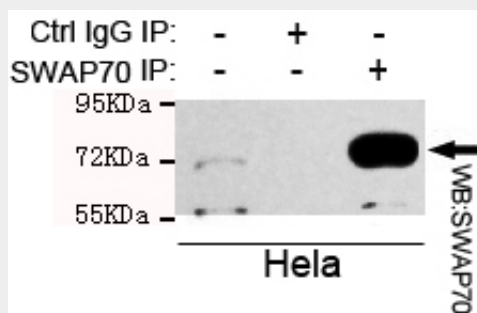
Expressed only in mature B-cells including those associated with mucosa-associated tissue and bronchus-associated tissue (PubMed:10681448). Widely expressed. Abundant in spleen, and fairly abundant in kidney, lung and liver. Also found in monocytes and macrophages (PubMed:12925760).

SWAP70 Antibody - Protocols

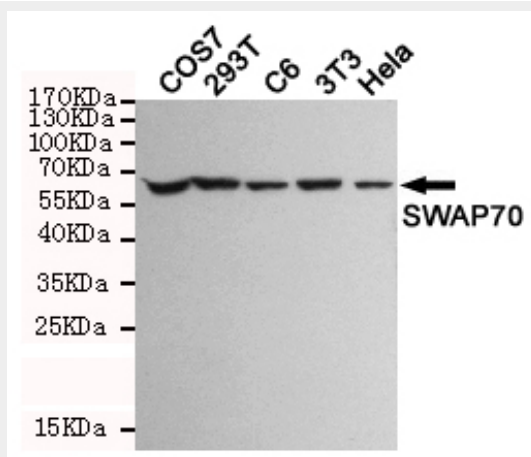
Provided below are standard protocols that you may find useful for product applications.

- [Western Blot](#)
- [Blocking Peptides](#)
- [Dot Blot](#)
- [Immunohistochemistry](#)
- [Immunofluorescence](#)
- [Immunoprecipitation](#)
- [Flow Cytometry](#)
- [Cell Culture](#)

SWAP70 Antibody - Images



Immunoprecipitation analysis of HeLa cell lysate using SWAP70 mouse mAb.



Western blot detection of SWAP70 in COS7,293T,C6,3T3 and Hela cell lysates and using SWAP70 mouse mAb (1:1000 diluted).Predicted band size: 70KDa.Observed band size: 70KDa.

SWAP70 Antibody - Background

Phosphatidylinositol 3,4,5-trisphosphate-dependent guanine nucleotide exchange factor (GEF) which, independently of RAS, transduces signals from tyrosine kinase receptors to RAC. It also mediates signaling of membrane ruffling. Regulates the actin cytoskeleton as an effector or adapter protein in response to agonist stimulated phosphatidylinositol (3,4)-bisphosphate production and cell protrusion (By similarity).

SWAP70 Antibody - References

Masat L.,et al.Proc. Natl. Acad. Sci. U.S.A. 97:2180-2184(2000).
Rapalus L.,et al.Clin. Immunol. 101:270-275(2001).
Monz D.W.,et al.Submitted (MAR-1999) to the EMBL/GenBank/DDBJ databases.
Ishikawa K.,et al.DNA Res. 5:169-176(1998).
Mural R.J.,et al.Submitted (SEP-2005) to the EMBL/GenBank/DDBJ databases.