

OLIG2 Antibody
Purified Mouse Monoclonal Antibody (Mab)
Catalog # AP52803

Specification

OLIG2 Antibody - Product Information

Application	WB
Primary Accession	O13516
Reactivity	Transfected
Host	Mouse
Clonality	Monoclonal
Isotype	IgG1
Calculated MW	32 KDa

OLIG2 Antibody - Additional Information

Gene ID 10215

Other Names

Basic domain helix loop helix protein class B 1; Basic helix loop helix protein class B 1; BHLHB; bHLHB1; bHLHE19; Class B basic helix loop helix protein 1; Class B basic helix-loop-helix protein 1; class E basic helix loop helix protein 19; Class E basic helix-loop-helix protein 19; Human protein kinase C binding protein RACK17; Olig2; OLIG2_HUMAN; Oligo2; Oligodendrocyte lineage transcription factor 2; Oligodendrocyte specific bHLH transcription factor 2; Oligodendrocyte transcription factor 2; OTTHUMP00000067569; OTTHUMP00000067570; PRKCBP2; Protein kinase C binding protein 2; Protein kinase C binding protein RACK17; Protein kinase C-binding protein 2; Protein kinase C-binding protein RACK17; RACK17.

Dilution

WB~~1:1000

Format

Liquid in PBS containing 50% glycerol, 0.5% BSA and 0.02% sodium azide, pH 7.3.

Storage

Store at 4°C short term. Aliquot and store at -20°C long term. Avoid freeze/thaw cycles.

OLIG2 Antibody - Protein Information

Name OLIG2

Synonyms BHLHB1, BHLHE19, PRKCBP2, RACK17

Function

Required for oligodendrocyte and motor neuron specification in the spinal cord, as well as for the development of somatic motor neurons in the hindbrain. Functions together with ZNF488 to promote oligodendrocyte differentiation. Cooperates with OLIG1 to establish the pMN domain of the embryonic neural tube. Antagonist of V2 interneuron and of NKX2-2-induced V3 interneuron

development.

Cellular Location

Nucleus {ECO:0000255|PROSITE-ProRule:PRU00981}. Cytoplasm. Note=The NLS contained in the bHLH domain could be masked in the native form and translocation to the nucleus could be mediated by interaction either with class E bHLH partner protein or with NKX2-2.

Tissue Location

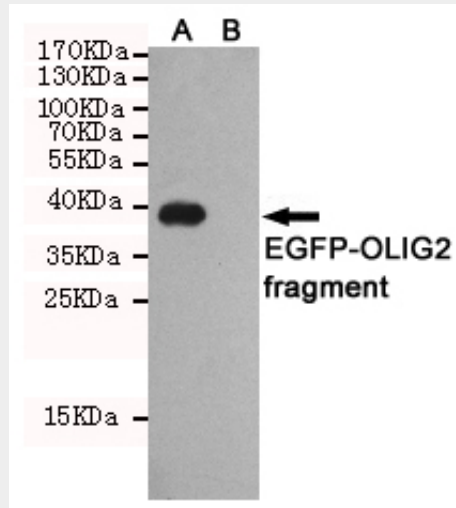
Expressed in the brain, in oligodendrocytes. Strongly expressed in oligodendrogliomas, while expression is weak to moderate in astrocytomas. Expression in glioblastomas highly variable

OLIG2 Antibody - Protocols

Provided below are standard protocols that you may find useful for product applications.

- [Western Blot](#)
- [Blocking Peptides](#)
- [Dot Blot](#)
- [Immunohistochemistry](#)
- [Immunofluorescence](#)
- [Immunoprecipitation](#)
- [Flow Cytometry](#)
- [Cell Culture](#)

OLIG2 Antibody - Images



Western blot detection of OLIG2 in CHO-K1 cell lysate and CHO-K1 transfected by EGFP-OLIG2 fragment cell lysate using OLIG2 mouse mAb (1:1000 diluted).

OLIG2 Antibody - Background

Required for oligodendrocyte and motor neuron specification in the spinal cord, as well as for the development of somatic motor neurons in the hindbrain. Cooperates with OLIG1 to establish the pMN domain of the embryonic neural tube. Antagonist of V2 interneuron and of NKX2-2-induced V3 interneuron development (By similarity).

OLIG2 Antibody - References

Kuroda S.,et al.Submitted (FEB-1996) to the EMBL/GenBank/DDBJ databases.
Wang J.,et al.Proc. Natl. Acad. Sci. U.S.A. 97:3497-3502(2000).
Ota T.,et al.Nat. Genet. 36:40-45(2004).
Marie Y.,et al.Lancet 358:298-300(2001).
Lu Q.R.,et al.Proc. Natl. Acad. Sci. U.S.A. 98:10851-10856(2001).