

BRAP Antibody
Purified Mouse Monoclonal Antibody (Mab)
Catalog # AP52816**Specification**

BRAP Antibody - Product Information

Application	WB
Primary Accession	Q7Z569
Reactivity	Human
Host	Mouse
Clonality	Monoclonal
Isotype	IgG1
Calculated MW	67 KDa

BRAP Antibody - Additional Information**Gene ID** 8315**Other Names**

3010002G07Rik;BRAP2;BRCA1 associated protein;EC 6.3.2.;Galectin 2 binding protein;IMP; Impedes mitogenic signal propagation;Renal carcinoma antigen NY REN 63; RING finger protein 52;RNF52;zgc:92894.

Dilution

WB~~1:1000

Format

Purified mouse monoclonal antibody in PBS(pH 7.4) containing with 0.09% (W/V) sodium azide and 50% glycerol.

Storage

Store at -20 °C.Stable for 12 months from date of receipt

BRAP Antibody - Protein Information**Name** BRAP ([HGNC:1099](#))**Synonyms** RNF52**Function**

Negatively regulates MAP kinase activation by limiting the formation of Raf/MEK complexes probably by inactivation of the KSR1 scaffold protein. Also acts as a Ras responsive E3 ubiquitin ligase that, on activation of Ras, is modified by auto-polyubiquitination resulting in the release of inhibition of Raf/MEK complex formation. May also act as a cytoplasmic retention protein with a role in regulating nuclear transport.

Cellular Location

Cytoplasm.

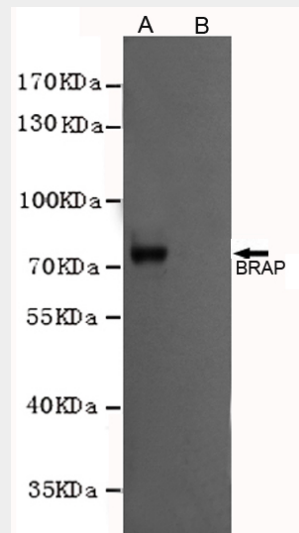
Tissue Location

Expressed in breast epithelial cell lines.

BRAP Antibody - Protocols

Provided below are standard protocols that you may find useful for product applications.

- [Western Blot](#)
- [Blocking Peptides](#)
- [Dot Blot](#)
- [Immunohistochemistry](#)
- [Immunofluorescence](#)
- [Immunoprecipitation](#)
- [Flow Cytometry](#)
- [Cell Culture](#)

BRAP Antibody - Images

Western blot analysis of extracts from CHO-K1 cells, transfected with a human pFLAG-CMV2-BRAP construct (A) or transfected with a human pFLAG-CMV2 construct (B), using BRAP mouse mAb (1:1000 diluted).

BRAP Antibody - Background

Negatively regulates MAP kinase activation by limiting the formation of Raf/MEK complexes probably by inactivation of the KSR1 scaffold protein. Also acts as a Ras responsive E3 ubiquitin ligase that, on activation of Ras, is modified by auto- polyubiquitination resulting in the release of inhibition of Raf/MEK complex formation. May also act as a cytoplasmic retention protein with a role in regulating nuclear transport.

BRAP Antibody - References

Li S.,et al.J. Biol. Chem. 273:6183-6189(1998).
Matheny S.A.,et al.Nature 427:256-260(2004).
Ota T.,et al.Nat. Genet. 36:40-45(2004).
Scherer S.E.,et al.Nature 440:346-351(2006).
Mural R.J.,et al.Submitted (JUL-2005) to the EMBL/GenBank/DDBJ databases.

