

RBBP5 Antibody
Purified Mouse Monoclonal Antibody (Mab)
Catalog # AP52860**Specification**

RBBP5 Antibody - Product Information

| | |
|-------------------|------------------------|
| Application | WB, ICC |
| Primary Accession | Q15291 |
| Reactivity | Human, Mouse |
| Host | Mouse |
| Clonality | Monoclonal |
| Isotype | IgG2a |
| Calculated MW | 70 KDa |

RBBP5 Antibody - Additional Information**Gene ID** 5929**Other Names**

RBBP 5; RBBP-5; RBBP5; RBBP5_HUMAN; RBQ 3; RBQ3; Retinoblastoma binding protein 5; Retinoblastoma binding protein RBQ3; Retinoblastoma binding protein5; Retinoblastoma-binding protein 5; Retinoblastoma-binding protein RBQ-3; SWD1; SWD1, Set1c WD40 repeat protein, homolog.

Dilution

WB~~1:1000

ICC~~1:100

Format

PBS(pH 7.4) containing with 0.09% (W/V) sodium azide and 50% glycerol.

Storage

Store at -20 °C.Stable for 12 months from date of receipt

RBBP5 Antibody - Protein Information**Name** RBBP5**Synonyms** RBQ3**Function**

In embryonic stem (ES) cells, plays a crucial role in the differentiation potential, particularly along the neural lineage, regulating gene induction and H3 'Lys-4' methylation at key developmental loci, including that mediated by retinoic acid (By similarity). Does not affect ES cell self-renewal (By similarity). Component or associated component of some histone methyltransferase complexes which regulates transcription through recruitment of those complexes to gene promoters (PubMed: <http://www.uniprot.org/citations/19131338> target="_blank">19131338). As part of the MLL1/MLL complex, involved in mono-, di- and

trimethylation at 'Lys-4' of histone H3 (PubMed:19556245). Histone H3 'Lys-4' methylation represents a specific tag for epigenetic transcriptional activation (PubMed:19556245). In association with ASH2L and WDR5, stimulates the histone methyltransferase activities of KMT2A, KMT2B, KMT2C, KMT2D, SETD1A and SETD1B (PubMed:21220120, PubMed:22266653).

Cellular Location

Nucleus.

Tissue Location

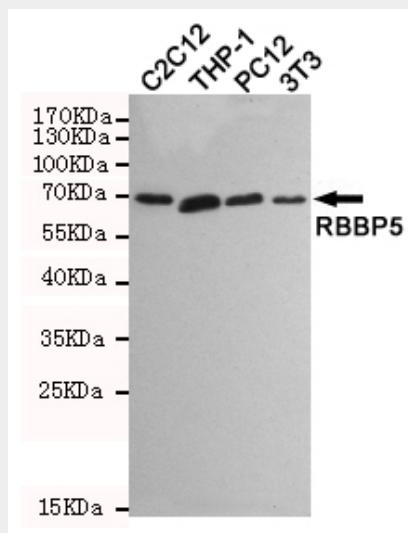
Ubiquitously expressed.

RBBP5 Antibody - Protocols

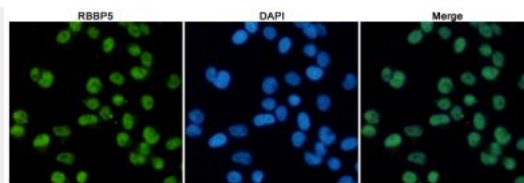
Provided below are standard protocols that you may find useful for product applications.

- [Western Blot](#)
- [Blocking Peptides](#)
- [Dot Blot](#)
- [Immunohistochemistry](#)
- [Immunofluorescence](#)
- [Immunoprecipitation](#)
- [Flow Cytometry](#)
- [Cell Culture](#)

RBBP5 Antibody - Images



Western blot detection of RBBP5 in C2C12, THP-1, PC12 and 3T3 cell lysates using RBBP5 mouse mAb (1:1000 diluted). Predicted band size: 70KDa. Observed band size: 70KDa.



Immunofluorescent analysis of HeLa cells fixed with 4% Paraformaldehyde and using anti-RBBP5 mouse mAb (dilution 1:100). DAPI was used to stain nucleus(blue).

RBBP5 Antibody - Background

In embryonic stem (ES) cells, plays a crucial role in the differentiation potential, particularly along the neural lineage, regulating gene induction and H3 'Lys-4' methylation at key developmental loci, including that mediated by retinoic acid (By similarity). As part of the MLL1/MLL complex, involved in mono-, di- and trimethylation at 'Lys-4' of histone H3. Histone H3 'Lys-4' methylation represents a specific tag for epigenetic transcriptional activation.

RBBP5 Antibody - References

Saijo M.,et al.Genomics 27:511-519(1995).
Ota T.,et al.Nat. Genet. 36:40-45(2004).
Gregory S.G.,et al.Nature 441:315-321(2006).
Mural R.J.,et al.Submitted (JUL-2005) to the EMBL/GenBank/DDBJ databases.
Hughes C.M.,et al.Mol. Cell 13:587-597(2004).