

**TSH2 Antibody (N-term)**  
**Affinity Purified Rabbit Polyclonal Antibody (Pab)**  
**Catalog # AP5288A**

**Specification**

---

**TSH2 Antibody (N-term) - Product Information**

Application	IF, FC, WB, IHC-P,E
Primary Accession	<a href="#">Q9NRE2</a>
Other Accession	<a href="#">A5GFT6</a> , <a href="#">Q68FE9</a>
Reactivity	Human
Predicted	Mouse, Pig
Host	Rabbit
Clonality	Polyclonal
Isotype	Rabbit IgG
Calculated MW	115005
Antigen Region	232-261

**TSH2 Antibody (N-term) - Additional Information**

**Gene ID** 128553

**Other Names**

Teashirt homolog 2, Ovarian cancer-related protein 10-2, OVC10-2, Zinc finger protein 218, TSHZ2, C20orf17, TSH2, ZNF218

**Target/Specificity**

This TSH2 antibody is generated from rabbits immunized with a KLH conjugated synthetic peptide between 232-261 amino acids from the N-terminal region of human TSH2.

**Dilution**

IF~~1:10~50  
FC~~1:10~50  
WB~~1:1000  
IHC-P~~1:50~100  
E~~Use at an assay dependent concentration.

**Format**

Purified polyclonal antibody supplied in PBS with 0.09% (W/V) sodium azide. This antibody is purified through a protein A column, followed by peptide affinity purification.

**Storage**

Maintain refrigerated at 2-8°C for up to 2 weeks. For long term storage store at -20°C in small aliquots to prevent freeze-thaw cycles.

**Precautions**

TSH2 Antibody (N-term) is for research use only and not for use in diagnostic or therapeutic procedures.

**TSH2 Antibody (N-term) - Protein Information**

**Name** TSHZ2

**Synonyms** C20orf17, TSH2, ZNF218

**Function** Probable transcriptional regulator involved in developmental processes. May act as a transcriptional repressor (Potential).

**Cellular Location**

Nucleus.

**Tissue Location**

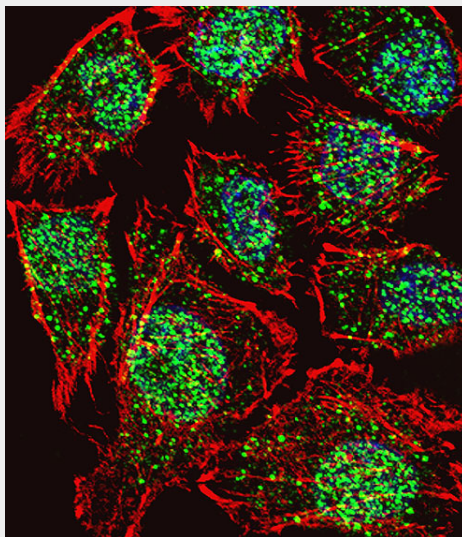
Expressed in brain; strongly reduced in post-mortem elderly subjects with Alzheimer disease.

**TSH2 Antibody (N-term) - Protocols**

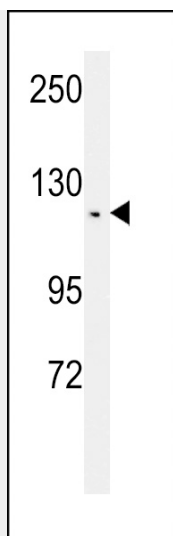
Provided below are standard protocols that you may find useful for product applications.

- [Western Blot](#)
- [Blocking Peptides](#)
- [Dot Blot](#)
- [Immunohistochemistry](#)
- [Immunofluorescence](#)
- [Immunoprecipitation](#)
- [Flow Cytometry](#)
- [Cell Culture](#)

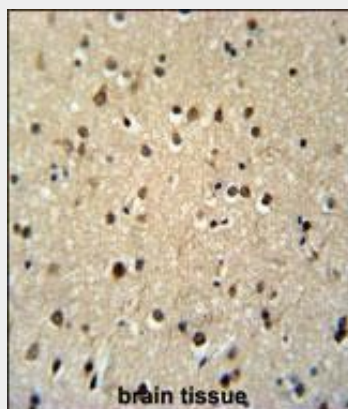
**TSH2 Antibody (N-term) - Images**



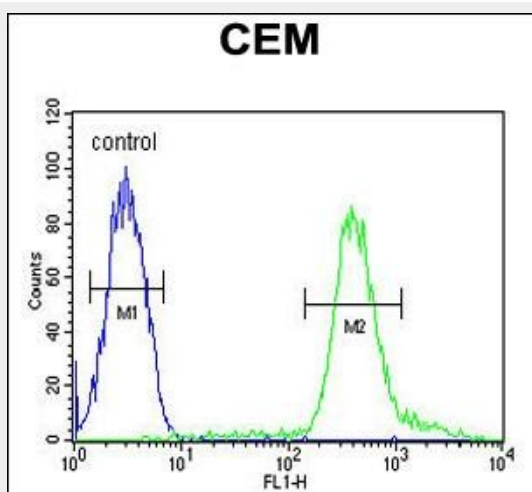
Fluorescent confocal image of U251 cell stained with TSH2 Antibody (N-term)(Cat#AP5288a).U251 cells were fixed with 4% PFA (20 min), permeabilized with Triton X-100 (0.1%, 10 min), then incubated with TSH2 primary antibody (1:25, 1 h at 37°C). For secondary antibody, Alexa Fluor® 488 conjugated donkey anti-rabbit antibody (green) was used (1:400, 50 min at 37°C).Cytoplasmic actin was counterstained with Alexa Fluor® 555 (red) conjugated Phalloidin (7units/ml, 1 h at 37°C). Nuclei were counterstained with DAPI (blue) (10 µg/ml, 10 min). TSH2 immunoreactivity is localized to Nucleus and Vesicles significantly.



Western blot analysis of TSH2 Antibody (N-term) (Cat. #AP5288a) in CEM cell line lysates (35ug/lane). TSH2 (arrow) was detected using the purified Pab.



TSH2 Antibody (N-term) (Cat. #AP5288a) immunohistochemistry analysis in formalin fixed and paraffin embedded human brain tissue followed by peroxidase conjugation of the secondary antibody and DAB staining. This data demonstrates the use of the TSH2 Antibody (N-term) for immunohistochemistry. Clinical relevance has not been evaluated.



TSH2 Antibody (N-term) (Cat. #AP5288a) flow cytometric analysis of CEM cells (right histogram) compared to a negative control cell (left histogram). FITC-conjugated goat-anti-rabbit secondary antibodies were used for the analysis.

**TSH2 Antibody (N-term) - Background**

TSH2 is transcriptional regulator involved in developmental processes (Potential).

**TSH2 Antibody (N-term) - References**

Jenkins, D., et al. Nephrol. Dial. Transplant. 25(1):54-60(2010)  
Ganesh, S.K., et al. Nat. Genet. 41(11):1191-1198(2009)  
Gocke, C.B., et al. J. Biol. Chem. 280(6):5004-5012(2005)