

**UTP6 Antibody (N-term)**  
**Affinity Purified Rabbit Polyclonal Antibody (Pab)**  
**Catalog # AP5296a**

**Specification**

---

**UTP6 Antibody (N-term) - Product Information**

Application	WB, FC, E
Primary Accession	<a href="#">Q9NYH9</a>
Other Accession	<a href="#">Q8VCY6</a>
Reactivity	Human
Predicted	Mouse
Host	Rabbit
Clonality	Polyclonal
Isotype	Rabbit IgG
Calculated MW	70194
Antigen Region	16-43

**UTP6 Antibody (N-term) - Additional Information**

**Gene ID** 55813

**Other Names**

U3 small nucleolar RNA-associated protein 6 homolog, Hepatocellular carcinoma-associated antigen 66, Multiple hat domains protein, UTP6, C17orf40, HCA66, MHAT

**Target/Specificity**

This UTP6 antibody is generated from rabbits immunized with a KLH conjugated synthetic peptide between 16-43 amino acids from the N-terminal region of human UTP6.

**Dilution**

WB~~1:1000  
FC~~1:10~50

**Format**

Purified polyclonal antibody supplied in PBS with 0.09% (W/V) sodium azide. This antibody is purified through a protein A column, followed by peptide affinity purification.

**Storage**

Maintain refrigerated at 2-8°C for up to 2 weeks. For long term storage store at -20°C in small aliquots to prevent freeze-thaw cycles.

**Precautions**

UTP6 Antibody (N-term) is for research use only and not for use in diagnostic or therapeutic procedures.

**UTP6 Antibody (N-term) - Protein Information**

**Name** UTP6 ([HGNC:18279](#))

**Synonyms** C17orf40, HCA66, MHAT

**Function** Part of the small subunit (SSU) processome, first precursor of the small eukaryotic ribosomal subunit. During the assembly of the SSU processome in the nucleolus, many ribosome biogenesis factors, an RNA chaperone and ribosomal proteins associate with the nascent pre- rRNA and work in concert to generate RNA folding, modifications, rearrangements and cleavage as well as targeted degradation of pre- ribosomal RNA by the RNA exosome. Involved in nucleolar processing of pre-18S ribosomal RNA.

**Cellular Location**

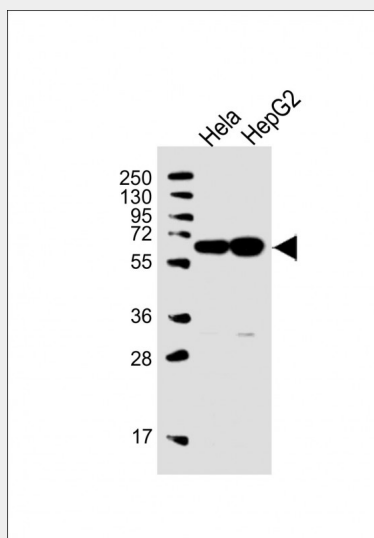
Nucleus, nucleolus

**UTP6 Antibody (N-term) - Protocols**

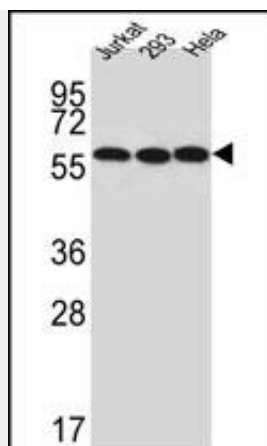
Provided below are standard protocols that you may find useful for product applications.

- [Western Blot](#)
- [Blocking Peptides](#)
- [Dot Blot](#)
- [Immunohistochemistry](#)
- [Immunofluorescence](#)
- [Immunoprecipitation](#)
- [Flow Cytometry](#)
- [Cell Culture](#)

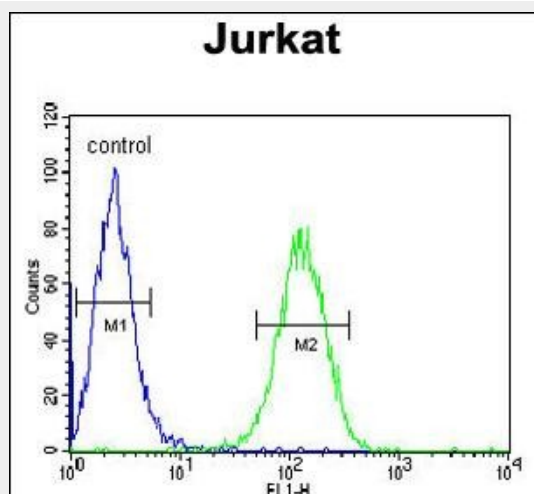
**UTP6 Antibody (N-term) - Images**



All lanes : Anti-UTP6 Antibody (N-term) at 1:1000 dilution Lane 1: HeLa whole cell lysate Lane 2: HepG2 whole cell lysate Lysates/proteins at 20 µg per lane. Secondary Goat Anti-Rabbit IgG, (H+L), Peroxidase conjugated at 1/10000 dilution. Predicted band size : 70 kDa Blocking/Dilution buffer: 5% NFDM/TBST.



Western blot analysis of UTP6 Antibody (N-term) (Cat. #AP5296a) in Jurkat, 293, HeLa cell line lysates (35ug/lane). UTP6 (arrow) was detected using the purified Pab.



UTP6 Antibody (N-term) (Cat. #AP5296a) flow cytometric analysis of Jurkat cells (right histogram) compared to a negative control cell (left histogram). FITC-conjugated goat-anti-rabbit secondary antibodies were used for the analysis.

#### UTP6 Antibody (N-term) - Background

UTP6 involved in nucleolar processing of pre-18S ribosomal RNA.

#### UTP6 Antibody (N-term) - References

- Fant, X., et al. J. Cell. Sci. 122 (PT 8), 1134-1144 (2009)
- Douglas, J., et al. Nat. Genet. 39(8):963-965(2007)
- Piddubnyak, V., et al. Cell Death Differ. 14(6):1222-1233(2007)