

TTC26 Antibody (C-term)
Affinity Purified Rabbit Polyclonal Antibody (Pab)
Catalog # AP5325b**Specification**

TTC26 Antibody (C-term) - Product Information

Application	WB, IHC-P,E
Primary Accession	A0AVF1
Other Accession	Q5U2N8 , Q8BS45 , Q4R7Z9 , NP_079202.2
Reactivity	Human
Predicted	Monkey, Mouse, Rat
Host	Rabbit
Clonality	Polyclonal
Isotype	Rabbit IgG
Calculated MW	64178
Antigen Region	467-496

TTC26 Antibody (C-term) - Additional Information**Gene ID** 79989**Other Names**

Intraflagellar transport protein 56, TTC26 (HGNC:21882)

Target/Specificity

This TTC26 antibody is generated from rabbits immunized with a KLH conjugated synthetic peptide between 467-496 amino acids from the C-terminal region of human TTC26.

Dilution

WB~~1:1000
IHC-P~~1:50~100

Format

Purified polyclonal antibody supplied in PBS with 0.09% (W/V) sodium azide. This antibody is purified through a protein A column, followed by peptide affinity purification.

Storage

Maintain refrigerated at 2-8°C for up to 2 weeks. For long term storage store at -20°C in small aliquots to prevent freeze-thaw cycles.

Precautions

TTC26 Antibody (C-term) is for research use only and not for use in diagnostic or therapeutic procedures.

TTC26 Antibody (C-term) - Protein Information

Name IFT56 ([HGNC:21882](#))

Synonyms TTC26

Function Component of the intraflagellar transport (IFT) complex B required for transport of proteins in the motile cilium. Required for transport of specific ciliary cargo proteins related to motility, while it is neither required for IFT complex B assembly or motion nor for cilium assembly. Required for efficient coupling between the accumulation of GLI2 and GLI3 at the ciliary tips and their dissociation from the negative regulator SUFU. Plays a key role in maintaining the integrity of the IFT complex B and the proper ciliary localization of the IFT complex B components. Not required for IFT complex A ciliary localization or function. Essential for maintaining proper microtubule organization within the ciliary axoneme.

Cellular Location

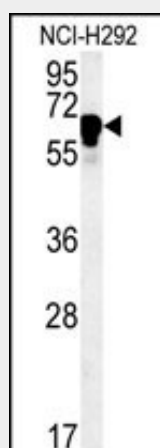
Cell projection, cilium {ECO:0000250|UniProtKB:Q8BS45}. Note=Localizes at the base to the ciliary transition zone. {ECO:0000250|UniProtKB:Q8BS45}

TTC26 Antibody (C-term) - Protocols

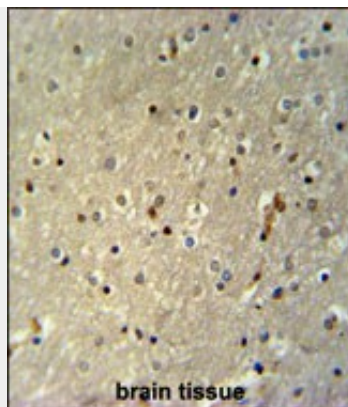
Provided below are standard protocols that you may find useful for product applications.

- [Western Blot](#)
- [Blocking Peptides](#)
- [Dot Blot](#)
- [Immunohistochemistry](#)
- [Immunofluorescence](#)
- [Immunoprecipitation](#)
- [Flow Cytometry](#)
- [Cell Culture](#)

TTC26 Antibody (C-term) - Images



TTC26 Antibody (C-term) (Cat. #AP5325b) western blot analysis in NCI-H292 cell line lysates (35ug/lane). This demonstrates the TTC26 antibody detected the TTC26 protein (arrow).



TTC26 Antibody (C-term) (Cat. #AP5325b) immunohistochemistry analysis in formalin fixed and paraffin embedded human brain tissue followed by peroxidase conjugation of the secondary antibody and DAB staining. This data demonstrates the use of the TTC26 Antibody (C-term) for immunohistochemistry. Clinical relevance has not been evaluated.

TTC26 Antibody (C-term) - References

Suzuki, Y., et al. Genome Res. 14(9):1711-1718(2004)