

TBL1 Antibody
Purified Mouse Monoclonal Antibody (Mab)
Catalog # AP53272**Specification**

TBL1 Antibody - Product Information

Application	WB, ICC
Primary Accession	O60907
Reactivity	Human
Host	Mouse
Clonality	Monoclonal
Isotype	IgG2b
Calculated MW	58 KDa

TBL1 Antibody - Additional Information**Gene ID** 6907**Other Names**

EBI;F box like/WD repeat protein TBL1X;F-box-like/WD repeat-containing protein TBL1X; SMAP 55;SMAP55;TBL 1;TBL 1X;TBL1;TBL1X; TBL1X_HUMAN;Transducin (beta) like 1;Transducin (beta) like 1 X linked;Transducin (beta) like 1X linked;Transducin beta like 1 X linked; Transducin beta like 1X;Transducin beta like 1X protein;Transducin beta like protein 1, X linked;Transducin beta-like protein 1X;Transducin-beta-like protein 1;X-linked.

Dilution

WB~~1:1000

ICC~~1:100

Format

Liquid in PBS containing 50% glycerol, 0.5% BSA and 0.02% sodium azide, pH 7.3.

Storage

Store at 4°C short term. Aliquot and store at -20°C long term. Avoid freeze/thaw cycles.

TBL1 Antibody - Protein Information**Name** TBL1X**Synonyms** TBL1**Function**

F-box-like protein involved in the recruitment of the ubiquitin/19S proteasome complex to nuclear receptor-regulated transcription units (PubMed:14980219). Plays an essential role in transcription activation mediated by nuclear receptors. Probably acts as integral component of corepressor complexes that mediates the recruitment of the 19S proteasome complex, leading to the subsequent proteasomal degradation of transcription repressor

complexes, thereby allowing cofactor exchange (PubMed:21240272).

Cellular Location

Nucleus. Note=Colocalized with MECP2 to the heterochromatin foci.
{ECO:0000250|UniProtKB:Q9QXE7}

Tissue Location

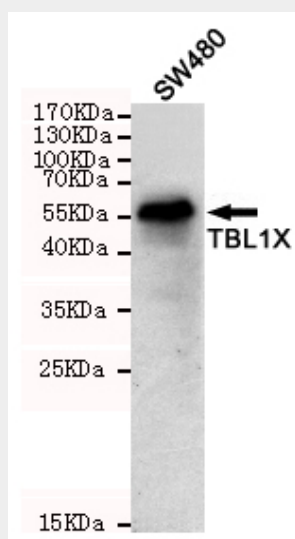
Ubiquitous..

TBL1 Antibody - Protocols

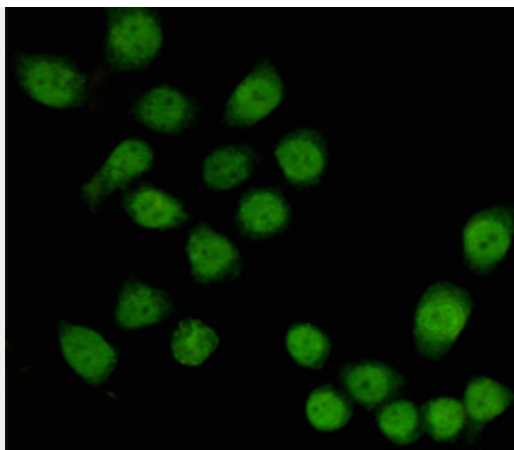
Provided below are standard protocols that you may find useful for product applications.

- [Western Blot](#)
- [Blocking Peptides](#)
- [Dot Blot](#)
- [Immunohistochemistry](#)
- [Immunofluorescence](#)
- [Immunoprecipitation](#)
- [Flow Cytometry](#)
- [Cell Culture](#)

TBL1 Antibody - Images



Western blot detection of TBL1X in SW480 cell lysates using TBL1X mouse mAb (1:1000 diluted). Predicted band size: 58KDa. Observed band size: 58KDa.



Immunocytochemistry staining of HeLa cells fixed with 4% Paraformaldehyde and using anti-TBL1X mouse mAb (dilution 1:100).

TBL1 Antibody - Background

F-box-like protein involved in the recruitment of the ubiquitin/19S proteasome complex to nuclear receptor-regulated transcription units. Plays an essential role in transcription activation mediated by nuclear receptors. Probably acts as integral component of corepressor complexes that mediates the recruitment of the 19S proteasome complex, leading to the subsequent proteasomal degradation of transcription repressor complexes, thereby allowing cofactor exchange.

TBL1 Antibody - References

Bassi M.T.,et al.Am. J. Hum. Genet. 64:1604-1616(1999).
Ota T.,et al.Nat. Genet. 36:40-45(2004).
Ross M.T.,et al.Nature 434:325-337(2005).
Guenther M.G.,et al.Genes Dev. 14:1048-1057(2000).
Li J.,et al.EMBO J. 19:4342-4350(2000).