

**ACTL6B Antibody (N-term)**  
**Affinity Purified Rabbit Polyclonal Antibody (Pab)**  
**Catalog # AP5327a****Specification**

---

**ACTL6B Antibody (N-term) - Product Information**

Application	WB, IHC-P, FC,E
Primary Accession	<a href="#">O94805</a>
Other Accession	<a href="#">NP_057272.1</a>
Reactivity	Human
Host	Rabbit
Clonality	Polyclonal
Isotype	Rabbit IgG
Calculated MW	46877
Antigen Region	42-70

**ACTL6B Antibody (N-term) - Additional Information****Gene ID** 51412**Other Names**

Actin-like protein 6B, 53 kDa BRG1-associated factor B, Actin-related protein Baf53b, ArpNalpha, BRG1-associated factor 53B, BAF53B, ACTL6B, ACTL6, BAF53B

**Target/Specificity**

This ACTL6B antibody is generated from rabbits immunized with a KLH conjugated synthetic peptide between 42-70 amino acids from the N-terminal region of human ACTL6B.

**Dilution**

WB~~1:1000  
IHC-P~~1:50~100  
FC~~1:10~50

**Format**

Purified polyclonal antibody supplied in PBS with 0.09% (W/V) sodium azide. This antibody is purified through a protein A column, followed by peptide affinity purification.

**Storage**

Maintain refrigerated at 2-8°C for up to 2 weeks. For long term storage store at -20°C in small aliquots to prevent freeze-thaw cycles.

**Precautions**

ACTL6B Antibody (N-term) is for research use only and not for use in diagnostic or therapeutic procedures.

**ACTL6B Antibody (N-term) - Protein Information****Name** ACTL6B ([HGNC:160](#))

**Synonyms** ACTL6, BAF53B

**Function** Involved in transcriptional activation and repression of select genes by chromatin remodeling (alteration of DNA-nucleosome topology). Component of SWI/SNF chromatin remodeling complexes that carry out key enzymatic activities, changing chromatin structure by altering DNA-histone contacts within a nucleosome in an ATP-dependent manner. Belongs to the neuron-specific chromatin remodeling complex (nBAF complex), as such plays a role in remodeling mononucleosomes in an ATP-dependent fashion, and is required for postmitotic neural development and dendritic outgrowth. During neural development a switch from a stem/progenitor to a postmitotic chromatin remodeling mechanism occurs as neurons exit the cell cycle and become committed to their adult state. The transition from proliferating neural stem/progenitor cells to postmitotic neurons requires a switch in subunit composition of the npBAF and nBAF complexes. As neural progenitors exit mitosis and differentiate into neurons, npBAF complexes which contain ACTL6A/BAF53A and PHF10/BAF45A, are exchanged for homologous alternative ACTL6B/BAF53B and DPF1/BAF45B or DPF3/BAF45C subunits in neuron- specific complexes (nBAF). The npBAF complex is essential for the self- renewal/proliferative capacity of the multipotent neural stem cells. The nBAF complex along with CREST plays a role regulating the activity of genes essential for dendrite growth. ACTL6B/BAF53B is not essential for assembly of the nBAF complex but is required for targeting the complex and CREST to the promoter of genes essential for dendritic growth (By similarity). Essential for neuronal maturation and dendrite development (PubMed:[31031012](#)).

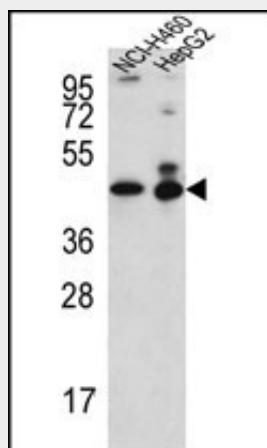
**Cellular Location**

Nucleus.

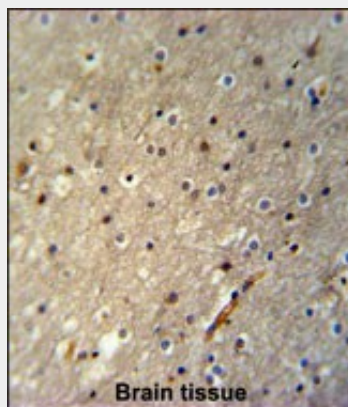
**ACTL6B Antibody (N-term) - Protocols**

Provided below are standard protocols that you may find useful for product applications.

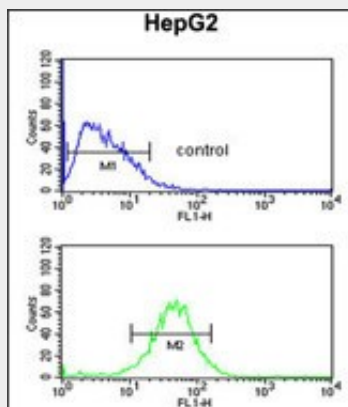
- [Western Blot](#)
- [Blocking Peptides](#)
- [Dot Blot](#)
- [Immunohistochemistry](#)
- [Immunofluorescence](#)
- [Immunoprecipitation](#)
- [Flow Cytometry](#)
- [Cell Culture](#)

**ACTL6B Antibody (N-term) - Images**

ACTL6B Antibody (N-term) (Cat. #AP5327a) western blot analysis in NCI-H460,HepG2 cell line lysates (35ug/lane).This demonstrates the ACTL6B antibody detected the ACTL6B protein (arrow).



ACTL6B Antibody (N-term) (Cat. #AP5327a) immunohistochemistry analysis in formalin fixed and paraffin embedded human brain tissue followed by peroxidase conjugation of the secondary antibody and DAB staining. This data demonstrates the use of the ACTL6B Antibody (N-term) for immunohistochemistry. Clinical relevance has not been evaluated.



ACTL6B Antibody (N-term) (Cat. #AP5327a) flow cytometric analysis of HepG2 cells (bottom histogram) compared to a negative control cell (top histogram).FITC-conjugated goat-anti-rabbit secondary antibodies were used for the analysis.

### **ACTL6B Antibody (N-term) - Background**

ACTL6B is a member of a family of actin-related proteins (ARPs) which share significant amino acid sequence identity to conventional actins. Both actins and ARPs have an actin fold, which is an ATP-binding cleft, as a common feature. The ARPs are involved in diverse cellular processes, including vesicular transport, spindle orientation, nuclear migration and chromatin remodeling. This gene encodes a subunit of the BAF (BRG1/brm-associated factor) complex in mammals, which is functionally related to SWI/SNF complex in *S. cerevisiae* and *Drosophila*; the latter is thought to facilitate transcriptional activation of specific genes by antagonizing chromatin-mediated transcriptional repression. This subunit may be involved in the regulation of genes by structural modulation of their chromatin, specifically in the brain.

### **ACTL6B Antibody (N-term) - References**

- Oma, Y., et al. Biochem. Biophys. Res. Commun. 301(2):521-528(2003)
- Kuroda, Y., et al. Biochem. Biophys. Res. Commun. 299(2):328-334(2002)
- Olave, I., et al. Genes Dev. 16(19):2509-2517(2002)