

CD248 Antibody
Purified Rabbit Polyclonal Antibody (Pab)
Catalog # AP53290**Specification**

CD248 Antibody - Product Information

Application	WB
Primary Accession	O9HCU0
Reactivity	Human
Host	Rabbit
Clonality	Polyclonal
Calculated MW	81 KDa
Antigen Region	352-391aa

CD248 Antibody - Additional Information**Gene ID** 57124**Other Names**

Endosialin, Tumor endothelial marker 1, CD248, CD248, CD164L1, TEM1

Dilution

WB~~ 1:1000

Format

Rabbit IgG in phosphate buffered saline , pH 7.4, 150mM NaCl, 0.09% (W/V) sodium azide and 50% glycerol

Storage

Store at -20 °C.Stable for 12 months from date of receipt

CD248 Antibody - Protein Information**Name** CD248**Synonyms** CD164L1, TEM1**Function**

Cell surface glycoprotein involved in various biological processes including angiogenesis, immune response modulation, and tissue remodeling and repair. Participates in pericyte proliferation through positive modulation of the PDGF receptor signaling pathway (PubMed:20484976). Acts as a scaffold for factor X, triggering allosteric changes and the spatial re-alignment of factor X with the TF-factor VIIa complex, thereby enhancing coagulation activation. Modulates the insulin signaling pathway by interacting with insulin receptor/INSR and by diminishing its capacity to be autophosphorylated in response to insulin. Also regulates LPS-induced inflammatory response in macrophages by favoring the production of proinflammatory cytokines. In human, negatively regulates T-cell proliferation compared with stromal cells where it increases proliferation

(PubMed:21466550).

Cellular Location

Membrane; Single-pass type I membrane protein

Tissue Location

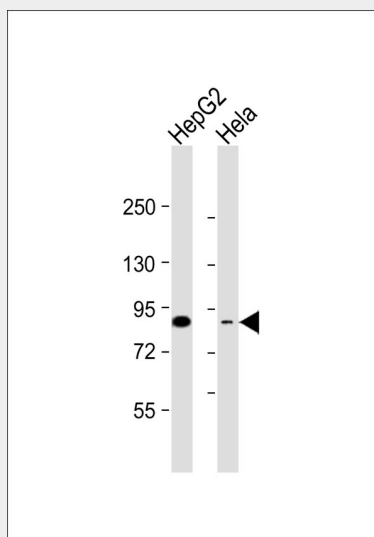
Expressed in tumor endothelial cells but absent or barely detectable in normal endothelial cells. Expressed in metastatic lesions of the liver and during angiogenesis of corpus luteum formation and wound healing. Expressed in vascular endothelial cells of malignant tumors but not in normal blood vessels. Expressed in stromal fibroblasts. Strongly expressed in pericytes (PubMed:20484976) Expressed on stromal cells and cells with lymphoid morphology such a T- cells (PubMed:21466550).

CD248 Antibody - Protocols

Provided below are standard protocols that you may find useful for product applications.

- [Western Blot](#)
- [Blocking Peptides](#)
- [Dot Blot](#)
- [Immunohistochemistry](#)
- [Immunofluorescence](#)
- [Immunoprecipitation](#)
- [Flow Cytometry](#)
- [Cell Culture](#)

CD248 Antibody - Images



All lanes : Anti-CD248 Antibody at 1:1000 dilution Lane 1: HepG2 whole cell lysate Lane 2: HeLa whole cell lysate Lysates/proteins at 20 µg per lane. Secondary Goat Anti-Rabbit IgG, (H+L), Peroxidase conjugated at 1/10000 dilution. Predicted band size : 81 kDa Blocking/Dilution buffer: 5% NFDM/TBST.

CD248 Antibody - Background

May play a role in tumor angiogenesis.

CD248 Antibody - References

St Croix B.,et al.Science 289:1197-1202(2000).
Christian S.,et al.J. Biol. Chem. 276:7408-7414(2001).
Ota T.,et al.Nat. Genet. 36:40-45(2004).
Rettig W.J.,et al.Proc. Natl. Acad. Sci. U.S.A. 89:10832-10836(1992).
Dolznic H.,et al.Cancer Immun. 5:10-10(2005).