

**CD276 Antibody**  
**Purified Rabbit Polyclonal Antibody (Pab)**  
**Catalog # AP53332****Specification**

---

**CD276 Antibody - Product Information**

|                   |                        |
|-------------------|------------------------|
| Application       | WB                     |
| Primary Accession | <a href="#">Q5ZPR3</a> |
| Reactivity        | Human                  |
| Host              | Rabbit                 |
| Clonality         | Polyclonal             |
| Calculated MW     | 57 KDa                 |
| Antigen Region    | 272-321                |

**CD276 Antibody - Additional Information****Gene ID** 80381**Dilution**

WB~~ 1:4000

**Format**

Rabbit IgG in phosphate buffered saline , pH 7.4, 150mM NaCl, 0.09% (W/V) sodium azide and 50% glycerol

**Storage**

Store at -20 °C.Stable for 12 months from date of receipt

**CD276 Antibody - Protein Information****Name** CD276**Synonyms** B7H3**Function**

May participate in the regulation of T-cell-mediated immune response. May play a protective role in tumor cells by inhibiting natural-killer mediated cell lysis as well as a role of marker for detection of neuroblastoma cells. May be involved in the development of acute and chronic transplant rejection and in the regulation of lymphocytic activity at mucosal surfaces. Could also play a key role in providing the placenta and fetus with a suitable immunological environment throughout pregnancy. Both isoform 1 and isoform 2 appear to be redundant in their ability to modulate CD4 T-cell responses. Isoform 2 is shown to enhance the induction of cytotoxic T-cells and selectively stimulates interferon gamma production in the presence of T-cell receptor signaling.

**Cellular Location**

Membrane; Single-pass type I membrane protein

### Tissue Location

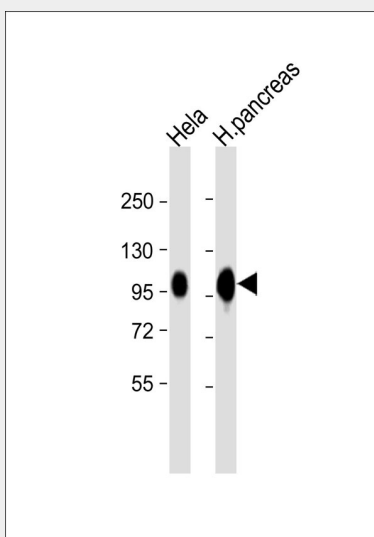
Ubiquitous but not detectable in peripheral blood lymphocytes or granulocytes. Weakly expressed in resting monocytes Expressed in dendritic cells derived from monocytes. Expressed in epithelial cells of sinonasal tissue. Expressed in extravillous trophoblast cells and Hofbauer cells of the first trimester placenta and term placenta.

### CD276 Antibody - Protocols

Provided below are standard protocols that you may find useful for product applications.

- [Western Blot](#)
- [Blocking Peptides](#)
- [Dot Blot](#)
- [Immunohistochemistry](#)
- [Immunofluorescence](#)
- [Immunoprecipitation](#)
- [Flow Cytometry](#)
- [Cell Culture](#)

### CD276 Antibody - Images



All lanes : Anti-CD276 Antibody at 1:4000 dilution Lane 1: HeLa whole cell lysate Lane 2: human pancreas lysate Lysates/proteins at 20 µg per lane. Secondary Goat Anti-Rabbit IgG, (H+L), Peroxidase conjugated at 1/10000 dilution. Predicted band size : 57 kDa Blocking/Dilution buffer: 5% NFDM/TBST.

### CD276 Antibody - Background

May participate in the regulation of T-cell-mediated immune response. May play a protective role in tumor cells by inhibiting natural-killer mediated cell lysis as well as a role of marker for detection of neuroblastoma cells. May be involved in the development of acute and chronic transplant rejection and in the regulation of lymphocytic activity at mucosal surfaces. Could also play a key role in providing the placenta and fetus with a suitable immunological environment throughout pregnancy. Both isoform 1 and isoform 2 appear to be redundant in their ability to modulate CD4 T-cell responses. Isoform 2 is shown to enhance the induction of cytotoxic T-cells and selectively stimulates interferon gamma production in the presence of T-cell receptor signaling.

**CD276 Antibody - References**

Chapoval A.I., et al. Nat. Immunol. 2:269-274(2001).  
Steinberger P., et al. J. Immunol. 172:2352-2359(2004).  
Clark H.F., et al. Genome Res. 13:2265-2270(2003).  
Ota T., et al. Nat. Genet. 36:40-45(2004).  
Otsuki T., et al. DNA Res. 12:117-126(2005).