

c-FER Antibody
Purified Rabbit Polyclonal Antibody (Pab)
Catalog # AP53347**Specification**

c-FER Antibody - Product Information

| | |
|-------------------|------------------------|
| Application | WB |
| Primary Accession | P07332 |
| Reactivity | Human |
| Host | Rabbit |
| Clonality | Polyclonal |
| Calculated MW | 95 KDa |
| Antigen Region | 139-188 |

c-FER Antibody - Additional Information**Gene ID** 2242**Dilution**

WB~~1:1000

Format

Rabbit IgG in phosphate buffered saline , pH 7.4, 150mM NaCl, 0.09% (W/V) sodium azide and 50% glycerol

Storage

Store at -20 °C.Stable for 12 months from date of receipt

c-FER Antibody - Protein Information**Name** FES**Synonyms** FPS**Function**

Tyrosine-protein kinase that acts downstream of cell surface receptors and plays a role in the regulation of the actin cytoskeleton, microtubule assembly, cell attachment and cell spreading. Plays a role in FCER1 (high affinity immunoglobulin epsilon receptor)-mediated signaling in mast cells. Acts down-stream of the activated FCER1 receptor and the mast/stem cell growth factor receptor KIT. Plays a role in the regulation of mast cell degranulation. Plays a role in the regulation of cell differentiation and promotes neurite outgrowth in response to NGF signaling. Plays a role in cell scattering and cell migration in response to HGF-induced activation of EZR. Phosphorylates BCR and down-regulates BCR kinase activity. Phosphorylates HCLS1/HS1, PECAM1, STAT3 and TRIM28.

Cellular Location

Cytoplasm, cytosol. Cytoplasm, cytoskeleton. Cell membrane; Peripheral membrane protein; Cytoplasmic side. Cytoplasmic vesicle. Golgi apparatus. Cell junction, focal adhesion

Note=Distributed throughout the cytosol when the kinase is not activated. Association with microtubules requires activation of the kinase activity. Shuttles between focal adhesions and cell-cell contacts in epithelial cells. Recruited to the lateral cell membrane in polarized epithelial cells by interaction with phosphorylated EZR Detected at tubular membrane structures in the cytoplasm and at the cell periphery

Tissue Location

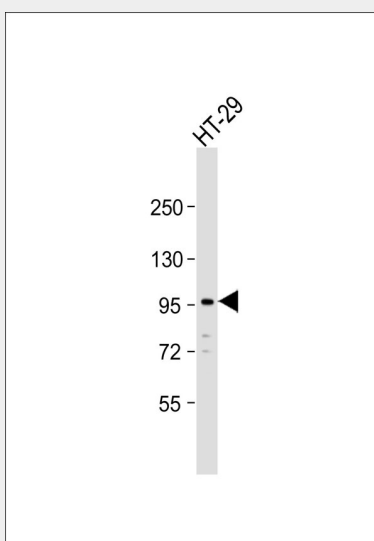
Widely expressed. Detected in adult colon epithelium (at protein level) (PubMed:16455651, PubMed:19051325) Expressed in melanocytes (at protein level) (PubMed:28463229)

c-FER Antibody - Protocols

Provided below are standard protocols that you may find useful for product applications.

- [Western Blot](#)
- [Blocking Peptides](#)
- [Dot Blot](#)
- [Immunohistochemistry](#)
- [Immunofluorescence](#)
- [Immunoprecipitation](#)
- [Flow Cytometry](#)
- [Cell Culture](#)

c-FER Antibody - Images



Anti-c-FER Antibody at 1:1000 dilution + HT-29 whole cell lysate Lysates/proteins at 20 µg per lane. Secondary Goat Anti-Rabbit IgG, (H+L), Peroxidase conjugated at 1/10000 dilution. Predicted band size : 93 kDa Blocking/Dilution buffer: 5% NFDM/TBST.

c-FER Antibody - Background

Tyrosine-protein kinase that acts downstream of cell surface receptors and plays a role in the regulation of the actin cytoskeleton, microtubule assembly, cell attachment and cell spreading. Plays a role in FCER1 (high affinity immunoglobulin epsilon receptor)-mediated signaling in mast cells. Acts downstream of the activated FCER1 receptor and the mast/stem cell growth factor receptor KIT. Plays a role in the regulation of mast cell degranulation. Plays a role in the regulation of cell differentiation and promotes neurite outgrowth in response to NGF signaling. Plays a role in

cell scattering and cell migration in response to HGF-induced activation of EZR. Phosphorylates BCR and down-regulates BCR kinase activity. Phosphorylates HCLS1/HS1, PECAM1, STAT3 and TRIM28.

c-FER Antibody - References

Alcalay M.,et al.Oncogene 5:267-275(1990).

Roebroek A.J.M.,et al.EMBO J. 4:2897-2903(1985).

Lefebvre J.-C.,et al.Submitted (DEC-2003) to the EMBL/GenBank/DDBJ databases.

Ota T.,et al.Nat. Genet. 36:40-45(2004).

Zody M.C.,et al.Nature 440:671-675(2006).