

PSMC3 Antibody
Purified Rabbit Polyclonal Antibody (Pab)
Catalog # AP53364**Specification**

PSMC3 Antibody - Product Information

Application	WB
Primary Accession	P17980
Reactivity	Human
Host	Rabbit
Clonality	Polyclonal
Calculated MW	49 KDa
Antigen Region	271-320

PSMC3 Antibody - Additional Information**Gene ID** 5702**Target/Specificity**

KLH-conjugated synthetic peptide encompassing a sequence within the center region of human PSMC3. The exact sequence is proprietary.

Dilution

WB~~ 1:1000

Format

Rabbit IgG in phosphate buffered saline , pH 7.4, 150mM NaCl, 0.09% (W/V) sodium azide and 50% glycerol

Storage

Store at -20 °C.Stable for 12 months from date of receipt

PSMC3 Antibody - Protein Information**Name** PSMC3**Synonyms** TBP1**Function**

Component of the 26S proteasome, a multiprotein complex involved in the ATP-dependent degradation of ubiquitinated proteins. This complex plays a key role in the maintenance of protein homeostasis by removing misfolded or damaged proteins, which could impair cellular functions, and by removing proteins whose functions are no longer required. Therefore, the proteasome participates in numerous cellular processes, including cell cycle progression, apoptosis, or DNA damage repair. PSMC3 belongs to the heterohexameric ring of AAA (ATPases associated with diverse cellular activities) proteins that unfolds ubiquitinated target proteins that are concurrently translocated into a proteolytic chamber and degraded into peptides.

Cellular Location

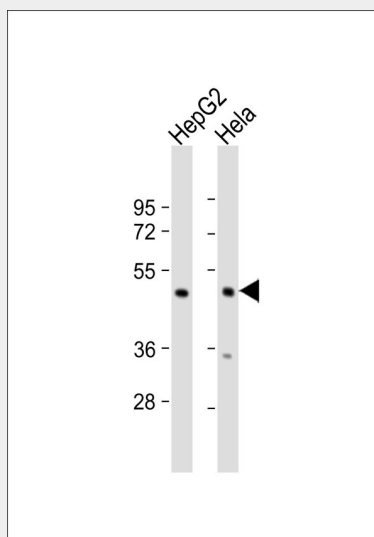
Cytoplasm. Nucleus. Note=Colocalizes with TRIM5 in the cytoplasmic bodies
{ECO:0000250|UniProtKB:O88685}

PSMC3 Antibody - Protocols

Provided below are standard protocols that you may find useful for product applications.

- [Western Blot](#)
- [Blocking Peptides](#)
- [Dot Blot](#)
- [Immunohistochemistry](#)
- [Immunofluorescence](#)
- [Immunoprecipitation](#)
- [Flow Cytometry](#)
- [Cell Culture](#)

PSMC3 Antibody - Images



All lanes : Anti-PSMC3 Antibody at 1:1000 dilution Lane 1: HepG2 whole cell lysate Lane 2: HeLa whole cell lysate Lysates/proteins at 20 µg per lane. Secondary Goat Anti-Rabbit IgG, (H+L), Peroxidase conjugated at 1/10000 dilution. Predicted band size : 49 kDa Blocking/Dilution buffer: 5% NFDM/TBST.

PSMC3 Antibody - Background

The 26S protease is involved in the ATP-dependent degradation of ubiquitinated proteins. The regulatory (or ATPase) complex confers ATP dependency and substrate specificity to the 26S complex (By similarity). In case of HIV-1 infection, suppresses Tat-mediated transactivation.

PSMC3 Antibody - References

Ohana B., et al. Proc. Natl. Acad. Sci. U.S.A. 90:138-142(1993).
Ota T., et al. Nat. Genet. 36:40-45(2004).
Mural R.J., et al. Submitted (SEP-2005) to the EMBL/GenBank/DDBJ databases.
Suzuki Y., et al. Submitted (APR-2005) to the EMBL/GenBank/DDBJ databases.
Nelbock P., et al. Science 248:1650-1653(1990).

