

PSMD11 Antibody
Purified Rabbit Polyclonal Antibody (Pab)
Catalog # AP53365**Specification**

PSMD11 Antibody - Product Information

Application	WB
Primary Accession	O00231
Reactivity	Human
Host	Rabbit
Clonality	Polyclonal
Calculated MW	47 KDa
Antigen Region	275-324

PSMD11 Antibody - Additional Information**Gene ID** 5717**Dilution**

WB~~ 1:1000

Format

Rabbit IgG in phosphate buffered saline , pH 7.4, 150mM NaCl, 0.09% (W/V) sodium azide and 50% glycerol

Storage

Store at -20 °C.Stable for 12 months from date of receipt

PSMD11 Antibody - Protein Information**Name** PSMD11**Function**

Component of the 26S proteasome, a multiprotein complex involved in the ATP-dependent degradation of ubiquitinated proteins. This complex plays a key role in the maintenance of protein homeostasis by removing misfolded or damaged proteins, which could impair cellular functions, and by removing proteins whose functions are no longer required. Therefore, the proteasome participates in numerous cellular processes, including cell cycle progression, apoptosis, or DNA damage repair. In the complex, PSMD11 is required for proteasome assembly. Plays a key role in increased proteasome activity in embryonic stem cells (ESCs): its high expression in ESCs promotes enhanced assembly of the 26S proteasome, followed by higher proteasome activity.

Cellular Location

Nucleus. Cytoplasm, cytosol

Tissue Location

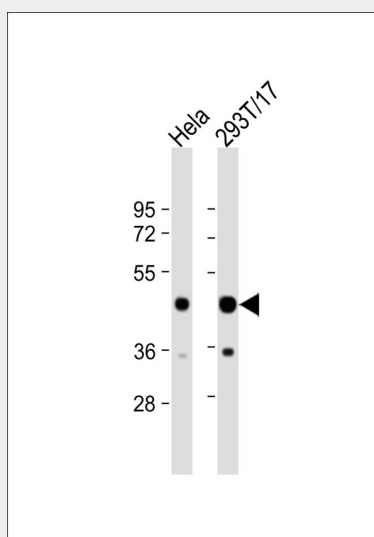
Highly expressed in embryonic stem cells (ESCs). Expression decreases as ESCs differentiate

PSMD11 Antibody - Protocols

Provided below are standard protocols that you may find useful for product applications.

- [Western Blot](#)
- [Blocking Peptides](#)
- [Dot Blot](#)
- [Immunohistochemistry](#)
- [Immunofluorescence](#)
- [Immunoprecipitation](#)
- [Flow Cytometry](#)
- [Cell Culture](#)

PSMD11 Antibody - Images



All lanes : Anti-PSMD11 Antibody at 1:1000 dilution Lane 1: HeLa whole cell lysate Lane 2: 293T/17 whole cell lysate Lysates/proteins at 20 µg per lane. Secondary Goat Anti-Rabbit IgG, (H+L), Peroxidase conjugated at 1/10000 dilution. Predicted band size : 47 kDa Blocking/Dilution buffer: 5% NFDM/TBST.

PSMD11 Antibody - Background

Component of the lid subcomplex of the 26S proteasome, a multiprotein complex involved in the ATP-dependent degradation of ubiquitinated proteins. In the complex, PSMD11 is required for proteasome assembly. Plays a key role in increased proteasome activity in embryonic stem cells (ESCs): its high expression in ESCs promotes enhanced assembly of the 26S proteasome, followed by higher proteasome activity.

PSMD11 Antibody - References

Hoffman L.,et al.FEBS Lett. 404:179-184(1997).
Saito A.,et al.Gene 203:241-250(1997).
Ota T.,et al.Nat. Genet. 36:40-45(2004).
Suzuki Y.,et al.Submitted (APR-2005) to the EMBL/GenBank/DDBJ databases.
Mural R.J.,et al.Submitted (SEP-2005) to the EMBL/GenBank/DDBJ databases.