

SH2D2A Antibody
Purified Rabbit Polyclonal Antibody (Pab)
Catalog # AP53374**Specification**

SH2D2A Antibody - Product Information

Application	WB
Primary Accession	O9NP31
Reactivity	Human
Host	Rabbit
Clonality	Polyclonal
Calculated MW	43 KDa
Antigen Region	214-263

SH2D2A Antibody - Additional Information**Gene ID** 9047**Dilution**

WB~~1:1000

Format

Rabbit IgG in phosphate buffered saline , pH 7.4, 150mM NaCl, 0.09% (W/V) sodium azide and 50% glycerol

Storage

Store at -20 °C.Stable for 12 months from date of receipt

SH2D2A Antibody - Protein Information**Name** SH2D2A**Synonyms** SCAP, TSAD, VRAP**Function**

Could be a T-cell-specific adapter protein involved in the control of T-cell activation. May play a role in the CD4-p56-LCK- dependent signal transduction pathway. Could also play an important role in normal and pathological angiogenesis. Could be an adapter protein that facilitates and regulates interaction of KDR with effector proteins important to endothelial cell survival and proliferation.

Cellular Location

Cytoplasm.

Tissue Location

Expression limited to tissues of the immune system and, in particular, activated T-cells. Expressed in peripheral blood leukocytes, thymus and spleen. Much lower expression or undetectable, in brain, placenta, skeletal muscle, prostate, testis, ovary, small intestine, and colon. Expressed at

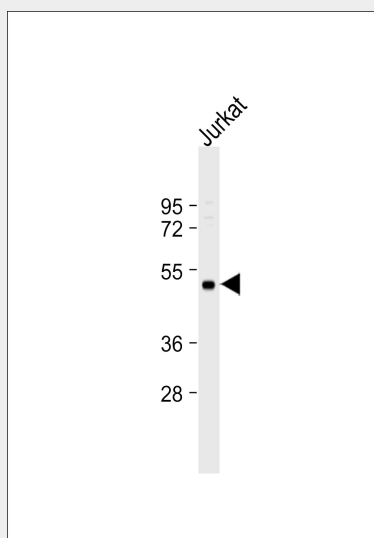
low levels in unstimulated T-cells, but not expressed in normal resting or activated B-cells. According to PubMed:10692392, expression is not restricted to activated T-cells, but strongly expressed in blood cell lineages, the endothelium and other cell and tissue types, such as heart, lung, and liver

SH2D2A Antibody - Protocols

Provided below are standard protocols that you may find useful for product applications.

- [Western Blot](#)
- [Blocking Peptides](#)
- [Dot Blot](#)
- [Immunohistochemistry](#)
- [Immunofluorescence](#)
- [Immunoprecipitation](#)
- [Flow Cytometry](#)
- [Cell Culture](#)

SH2D2A Antibody - Images



Anti-SH2D2A Antibody at 1:1000 dilution + Jurkat whole cell lysate Lysates/proteins at 20 µg per lane. Secondary Goat Anti-Rabbit IgG, (H+L), Peroxidase conjugated at 1/10000 dilution. Predicted band size : 43 kDa Blocking/Dilution buffer: 5% NFDM/TBST.

SH2D2A Antibody - Background

Could be a T-cell-specific adapter protein involved in the control of T-cell activation. May play a role in the CD4-p56- LCK-dependent signal transduction pathway. Could also play an important role in normal and pathological angiogenesis. Could be an adapter protein that facilitates and regulates interaction of KDR with effector proteins important to endothelial cell survival and proliferation.

SH2D2A Antibody - References

Spurkland A.,et al.J. Biol. Chem. 273:4539-4546(1998).
Dai K.Z.,et al.Immunogenetics 51:179-185(2000).
Wu L.-W.,et al.J. Biol. Chem. 275:6059-6062(2000).
Lee J.-S.,et al.Submitted (FEB-1998) to the EMBL/GenBank/DDBJ databases.

Suzuki Y.,et al.Submitted (APR-2005) to the EMBL/GenBank/DDBJ databases.