

**Anti-MEK1/2 Monoclonal Antibody**  
**Mouse Monoclonal Antibody**  
**Catalog # AP53390****Specification**

---

**Anti-MEK1/2 Monoclonal Antibody - Product Information**

Application	WB
Primary Accession	<a href="#">P36507</a> , <a href="#">Q02750</a>
Other Accession	<a href="#">NM_002755</a>
Reactivity	Human
Host	Mouse
Clonality	Monoclonal
Isotype	IgG1
Immunogen	Recombinant human MEK1 protein.
Purification	Affinity purified
Calculated MW	45 KDa

**Anti-MEK1/2 Monoclonal Antibody - Additional Information****Other Names**

CFC3; MEK1; MKK1; MAPKK1; PRKMK1

**Dilution**

WB~~1:500

**Format**

Purified mouse monoclonal antibody in PBS(pH 7.4) containing with 0.09% (W/V) sodium azide and 50% glycerol.

**Storage**

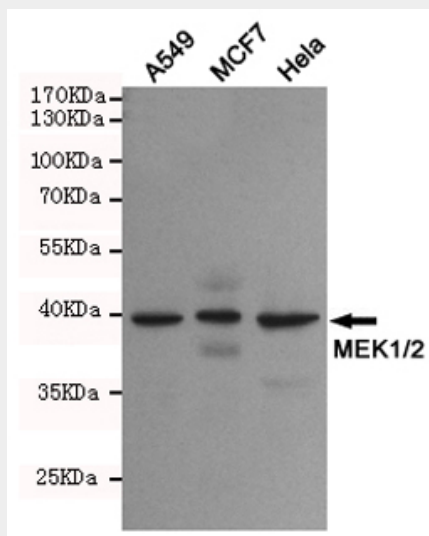
Store at -20 °C.Stable for 12 months from date of receipt

**Anti-MEK1/2 Monoclonal Antibody - Protein Information****Anti-MEK1/2 Monoclonal Antibody - Protocols**

Provided below are standard protocols that you may find useful for product applications.

- [Western Blot](#)
- [Blocking Peptides](#)
- [Dot Blot](#)
- [Immunohistochemistry](#)
- [Immunofluorescence](#)
- [Immunoprecipitation](#)
- [Flow Cytometry](#)
- [Cell Culture](#)

### Anti-MEK1/2 Monoclonal Antibody - Images



Western blot detection of MEK1/2 in A549, MCF7 and HeLa cell lysates using MEK1/2 mouse mAb(dilution 1:500).Predicted band size:45kDa.Observed band size:45kDa.

### Anti-MEK1/2 Monoclonal Antibody - Background

Dual specificity protein kinase which acts as an essential component of the MAP kinase signal transduction pathway. Binding of extracellular ligands such as growth factors, cytokines and hormones to their cell-surface receptors activates RAS and this init