

Anti-HtrA2/Omi Antibody
Mouse Anti Human Monoclonal Antibody
Catalog # AP53417**Specification**

Anti-HtrA2/Omi Antibody - Product Information

Application	WB
Primary Accession	O43464
Other Accession	NM_013247
Reactivity	Mouse, Hamster
Host	Mouse
Clonality	Monoclonal
Isotype	IgG1
Immunogen	Recombinant human HtrA2/Omi protein.
Purification	Affinity purified
Calculated MW	36 KDa

Anti-HtrA2/Omi Antibody - Additional Information**Gene ID** 27429**Other Names**

High temperature requirement protein A2;HTRA 2;HtrA like serine protease;HtrA serine peptidase 2;HtrA, E. coli, homolog of, 2;HtrA2;HTRA2_HUMAN;mitochondrial;Omi stress regulated endoprotease;Omi stress-regulated endoprotease;PARK 13;PARK13;Protease serine 25;PRSS 25;PRSS25;Serine protease 25;Serine protease HTRA2;Serine protease HTRA2 mitochondrial;Serine protease htra2 mitochondrial precursor;Serine protease omi;Serine proteinase OMI.

Dilution

WB~~1:1000

Format

PBS(pH 7.4) containing with 0.09% (W/V) sodium azide and 50% glycerol.

Storage

Store at -20 °C.Stable for 12 months from date of receipt

Anti-HtrA2/Omi Antibody - Protein Information**Name** HTRA2**Synonyms** OMI, PRSS25**Function**

Serine protease that shows proteolytic activity against a non-specific substrate beta-casein. Promotes or induces cell death either by direct binding to and inhibition of BIRC proteins (also called inhibitor of apoptosis proteins, IAPs), leading to an increase in caspase activity, or by a BIRC

inhibition-independent, caspase- independent and serine protease activity-dependent mechanism. Cleaves THAP5 and promotes its degradation during apoptosis. Isoform 2 seems to be proteolytically inactive.

Cellular Location

Mitochondrion intermembrane space. Mitochondrion membrane; Single-pass membrane protein
Note=Predominantly present in the intermembrane space. Released into the cytosol following apoptotic stimuli, such as UV treatment, and stimulation of mitochondria with caspase-8 truncated BID/tBID

Tissue Location

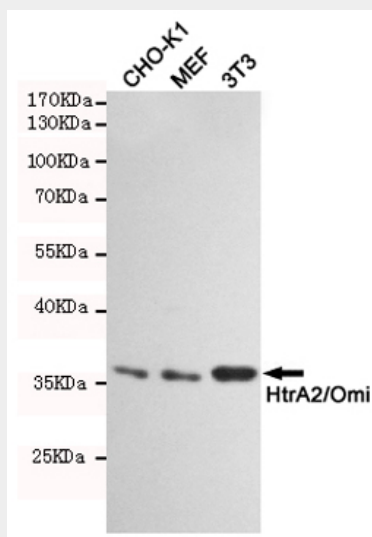
[Isoform 1]: Ubiquitously expressed.

Anti-HtrA2/Omi Antibody - Protocols

Provided below are standard protocols that you may find useful for product applications.

- [Western Blot](#)
- [Blocking Peptides](#)
- [Dot Blot](#)
- [Immunohistochemistry](#)
- [Immunofluorescence](#)
- [Immunoprecipitation](#)
- [Flow Cytometry](#)
- [Cell Culture](#)

Anti-HtrA2/Omi Antibody - Images



Western blot detection of HtrA2/Omi in CHO-K1, MEF and 3T3 cell lysates using HtrA2/Omi mouse mAb(dilution 1:1000). Predicted band size: 49kDa. Observed band size: 36kDa.

Anti-HtrA2/Omi Antibody - Background

Serine protease that shows proteolytic activity against a non-specific substrate beta-casein. Promotes or induces cell death either by direct binding to and inhibition of BIRC proteins (also called inhibitor of apoptosis proteins, IAPs), leading to an inc