

**Anti-Enolase-2 Antibody**  
**Mouse Monoclonal Antibody**  
**Catalog # AP53432****Specification**

---

**Anti-Enolase-2 Antibody - Product Information**

Application	WB, E
Primary Accession	<a href="#">P09104</a>
Other Accession	<a href="#">NM_001975</a>
Reactivity	Human, Mouse, Rat
Host	Mouse
Clonality	Monoclonal
Isotype	IgG1
Immunogen	Synthetic peptide derived from human NSE.
Purification	Affinity purified
Calculated MW	47kDa kDa

**Anti-Enolase-2 Antibody - Additional Information****Gene ID** 2026**Other Names**

2 phospho D glycerate hydrolyase;2-phospho-D-glycerate hydro-lyase;Eno 2;ENO2;ENOG;ENOG\_HUMAN;Enolase 2 (gamma, neuronal);Enolase 2;Enolase 2 gamma neuronal;Enolase2;Epididymis secretory protein Li 279;Gamma enolase;Gamma-enolase;HEL S 279;Neural enolase;Neuron specific enolase;Neuron specific gamma enolase;Neuron-specific enolase;Neurone specific enolase;NSE

**Dilution**

WB~~1:1000  
E~~N/A

**Format**

Purified mouse monoclonal antibody in PBS(pH 7.4) containing with 0.09% (W/V) sodium azide.

**Storage**

Store at -20 °C.Stable for 12 months from date of receipt

**Anti-Enolase-2 Antibody - Protein Information****Name** ENO2**Function**

Has neurotrophic and neuroprotective properties on a broad spectrum of central nervous system (CNS) neurons. Binds, in a calcium- dependent manner, to cultured neocortical neurons and promotes cell survival (By similarity).

**Cellular Location**

Cytoplasm. Cell membrane. Note=Can translocate to the plasma membrane in either the homodimeric (alpha/alpha) or heterodimeric (alpha/gamma) form

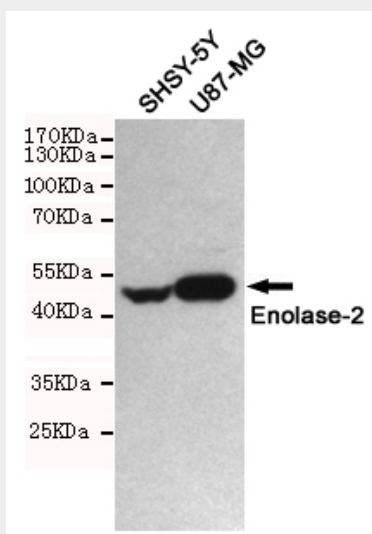
**Tissue Location**

The alpha/alpha homodimer is expressed in embryo and in most adult tissues. The alpha/beta heterodimer and the beta/beta homodimer are found in striated muscle, and the alpha/gamma heterodimer and the gamma/gamma homodimer in neurons

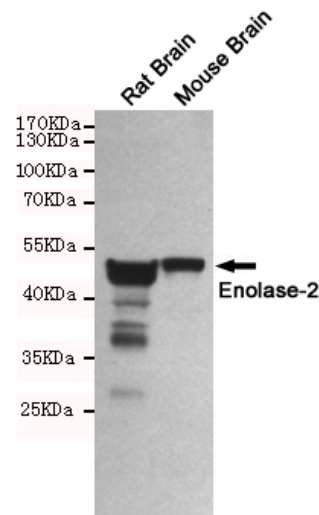
**Anti-Enolase-2 Antibody - Protocols**

Provided below are standard protocols that you may find useful for product applications.

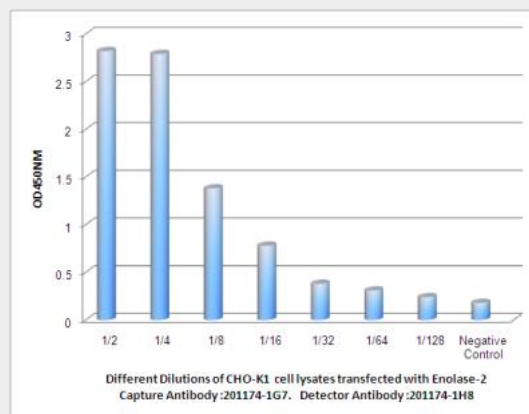
- [Western Blot](#)
- [Blocking Peptides](#)
- [Dot Blot](#)
- [Immunohistochemistry](#)
- [Immunofluorescence](#)
- [Immunoprecipitation](#)
- [Flow Cytometry](#)
- [Cell Culture](#)

**Anti-Enolase-2 Antibody - Images**

Western blot detection of Enolase-2 in SHSY-5Y and U87-MG cell lysates using Enolase-2 mouse mAb (1:1000 diluted). Predicted band size: 47KDa. Observed band size: 47KDa.



Western blot detection of Enolase-2 in Rat Brain and Mouse Brain lysates using Enolase-2 mouse mAb (1:1000 diluted). Predicted band size: 47KDa. Observed band size: 47KDa.



Observed Enolase-2 levels in CHO-K1 cell lysates transfected with Enolase-2 at different dilution.

### Anti-Enolase-2 Antibody - Background

Has neurotrophic and neuroprotective properties on a broad spectrum of central nervous system (CNS) neurons. Binds, in a calcium-dependent manner, to cultured neocortical neurons and promotes cell survival.