

**Anti-Toll-like Receptor 3 Antibody**  
**Mouse Monoclonal Antibody**  
**Catalog # AP53439****Specification**

---

**Anti-Toll-like Receptor 3 Antibody - Product Information**

Application	WB
Primary Accession	<a href="#">O15455</a>
Other Accession	<a href="#">NM_003265</a>
Reactivity	Transfected
Host	Mouse
Clonality	Monoclonal
Isotype	IgG2b
Immunogen	Purified recombinant human Toll-Like Receptor 3 protein fragments expressed in E.coli.
Purification	Affinity purified

**Anti-Toll-like Receptor 3 Antibody - Additional Information****Gene ID** 7098**Other Names**

CD283 ; CD283 antigen ; IIAE2 ; TLR 3 ; Tlr3 ; TLR3\_HUMAN ; Toll Like Receptor 3 ; Toll-like receptor 3.

**Dilution**

WB~~1:1000

**Format**

Liquid in PBS containing 50% glycerol, 0.5% BSA and 0.02% sodium azide, pH 7.3.

**Storage**

Store at 4°C short term. Aliquot and store at -20°C long term. Avoid freeze/thaw cycles.

**Anti-Toll-like Receptor 3 Antibody - Protein Information****Name** TLR3 ([HGNC:11849](#))**Function**

Key component of innate and adaptive immunity. TLRs (Toll-like receptors) control host immune response against pathogens through recognition of molecular patterns specific to microorganisms. TLR3 is a nucleotide-sensing TLR which is activated by double-stranded RNA, a sign of viral infection. Acts via the adapter TRIF/TICAM1, leading to NF-kappa-B activation, IRF3 nuclear translocation, cytokine secretion and the inflammatory response.

**Cellular Location**

Endoplasmic reticulum membrane; Single-pass type I membrane protein. Endosome membrane.

Early endosome

#### **Tissue Location**

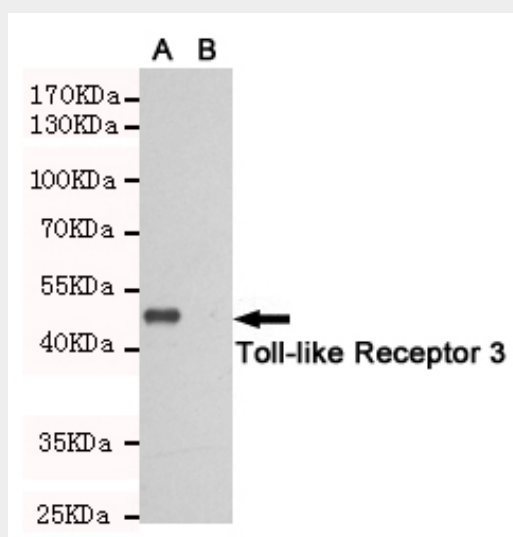
Expressed at high level in placenta and pancreas. Also detected in CD11c+ immature dendritic cells. Only expressed in dendritic cells and not in other leukocytes, including monocyte precursors. TLR3 is the TLR that is expressed most strongly in the brain, especially in astrocytes, glia, and neurons

#### **Anti-Toll-like Receptor 3 Antibody - Protocols**

Provided below are standard protocols that you may find useful for product applications.

- [Western Blot](#)
- [Blocking Peptides](#)
- [Dot Blot](#)
- [Immunohistochemistry](#)
- [Immunofluorescence](#)
- [Immunoprecipitation](#)
- [Flow Cytometry](#)
- [Cell Culture](#)

#### **Anti-Toll-like Receptor 3 Antibody - Images**



Western blot detection of Toll-like Receptor 3 in CHO-K1 cell lysate (A) and CHO-K1 transfected by Toll-like Receptor 3 (B) cell lysate using Toll-like Receptor 3 mouse mAb (1:1000 diluted). Predicted band size: 50KDa. Observed band size: 50KDa.

#### **Anti-Toll-like Receptor 3 Antibody - Background**

Key component of innate and adaptive immunity. TLRs (Toll-like receptors) control host immune response against pathogens through recognition of molecular patterns specific of microorganisms. TLR3 is a nucleotide-sensing TLR which is activated by double-str