

Anti-S100A6 Antibody
Mouse Monoclonal Antibody
Catalog # AP53481**Specification**

Anti-S100A6 Antibody - Product Information

Application	WB
Primary Accession	P06703
Other Accession	NM_014624
Reactivity	Human
Host	Mouse
Clonality	Monoclonal
Isotype	IgG1
Immunogen	Purified recombinant human S100A6 protein expressed in E.coli.
Purification	Affinity purified
Calculated MW	10KDa KDa

Anti-S100A6 Antibody - Additional Information**Gene ID** 6277**Other Names**

2A9;5B10;CABP;CACY;Calcyclin;Growth factor inducible protein 2A9;Growth factor-inducible protein 2A9;MLN 4;MLN4;OTTHUMP00000015472;OTTHUMP00000015473;PRA;PRAGrowth factor inducible protein 2A9;Prolactin receptor associated protein;Prolactin receptor-associated protein;Protein S100 A6;Protein S100-A6;S100 A6;S100 calcium binding protein A6 (calcyclin);S100 calcium binding protein A6;S100 calcium-binding protein A6;S100A6;S10A6_HUMAN.

Dilution

WB~~1:1000

Format

Liquid in PBS containing 50% glycerol, 0.5% BSA and 0.02% sodium azide, pH 7.3.

Storage

Store at 4°C short term. Aliquot and store at -20°C long term. Avoid freeze/thaw cycles.

Anti-S100A6 Antibody - Protein Information**Name** S100A6**Synonyms** CACY**Function**

May function as calcium sensor and modulator, contributing to cellular calcium signaling. May function by interacting with other proteins, such as TPR-containing proteins, and indirectly play a role in many physiological processes such as the reorganization of the actin cytoskeleton and in

cell motility. Binds 2 calcium ions. Calcium binding is cooperative.

Cellular Location

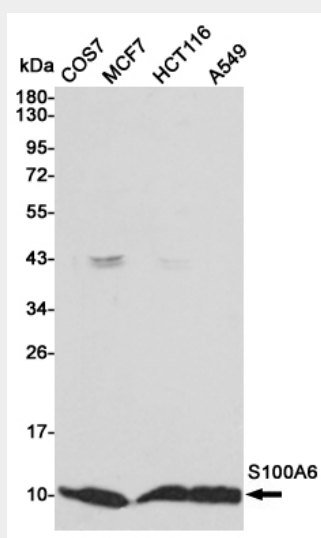
Nucleus envelope. Cytoplasm. Cell membrane; Peripheral membrane protein; Cytoplasmic side

Anti-S100A6 Antibody - Protocols

Provided below are standard protocols that you may find useful for product applications.

- [Western Blot](#)
- [Blocking Peptides](#)
- [Dot Blot](#)
- [Immunohistochemistry](#)
- [Immunofluorescence](#)
- [Immunoprecipitation](#)
- [Flow Cytometry](#)
- [Cell Culture](#)

Anti-S100A6 Antibody - Images



Western blot detection of S100A6 in COS7, MCF7, HCT116 and A549 cell lysates using S100A6 mouse mAb (1:1000 diluted). Predicted band size: 10 kDa. Observed band size: 10 kDa.

Anti-S100A6 Antibody - Background

May function as calcium sensor and modulator, contributing to cellular calcium signaling. May function by interacting with other proteins, such as TPR-containing proteins, and indirectly play a role in many physiological processes such as the reorganization