

**Anti-LC3A/B Antibody**  
**Mouse Monoclonal Antibody**  
**Catalog # AP53484****Specification**

---

**Anti-LC3A/B Antibody - Product Information**

|                   |   |
|-------------------|---|
| Application       | WB  |
| Primary Accession | <a href="#">LC3A:Q9H492</a> , <a href="#">LC3B:Q9GZQ8</a> |
| Other Accession   | <a href="#">NM_022818</a>                                 |
| Reactivity        | Human, Rat  |
| Host              | Mouse   |
| Clonality         | Monoclonal  |
| Isotype           | IgG2b   |
| Immunogen         | Synthetic peptide corresponding to human LC3B protein     |
| Calculated MW     | 14,16KDa KDa  |

**Anti-LC3A/B Antibody - Additional Information****Other Names**

ATG8F; Autophagy related protein LC3 A; Autophagy related protein LC3 B; Autophagy related ubiquitin like modifier LC3 A; Autophagy related ubiquitin like modifier LC3 B; Autophagy-related protein LC3 B; Autophagy-related ubiquitin-like modifier LC3 B; LC3; MAP1 light chain 3 like protein 1; MAP1 light chain 3 like protein 2; MAP1 light chain 3-like protein 2; MAP1A/1B light chain 3 A; MAP1A/1B light chain 3 B; MAP1A/1BLC3; MAP1A/MAP1B LC3 A; MAP1A/MAP1B LC3 B; MAP1A/MAP1B light chain 3 B; MAP1ALC3; MAP1BLC3; MAP1LC3A; Map1lc3b; Microtubule associated protein 1 light chain 3 alpha; Microtubule associated protein 1 light chain 3 beta; Microtubule associated proteins 1A/1B light chain 3; Microtubule associated proteins 1A/1B light chain 3A; Microtubule associated proteins 1A/1B light chain 3B; Microtubule-associated protein 1 light chain 3 beta; Microtubule-associated proteins 1A/1B light chain 3B; MLP3B\_HUMAN.

**Dilution**

WB~~1:1000

**Format**

PBS(pH 7.4) containing with 0.09% (W/V) sodium azide and 50% glycerol.

**Storage**

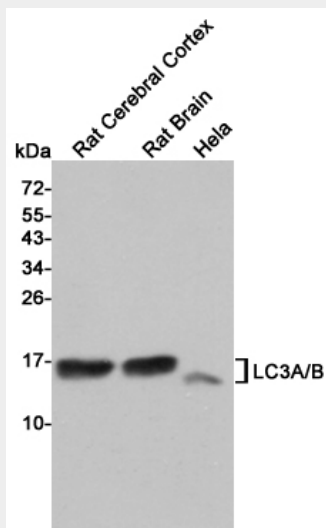
Store at -20 °C.Stable for 12 months from date of receipt

**Anti-LC3A/B Antibody - Protein Information****Anti-LC3A/B Antibody - Protocols**

Provided below are standard protocols that you may find useful for product applications.

- [Western Blot](#)
- [Blocking Peptides](#)
- [Dot Blot](#)
- [Immunohistochemistry](#)
- [Immunofluorescence](#)
- [Immunoprecipitation](#)
- [Flow Cytometry](#)
- [Cell Culture](#)

#### Anti-LC3A/B Antibody - Images



Western blot detection of LC3A/B in Rat Cerebral Cortex, Rat Brain and HeLa cell lysates using LC3A/B Mouse mAb (1:1000 diluted). Predicted band size: 15KDa. Observed band size: 14, 16KDa.

#### Anti-LC3A/B Antibody - Background

LC3A: Ubiquitin-like modifier involved in formation of autophagosomal vacuoles (autophagosomes) (PubMed:20713600, PubMed:24290141). Whereas LC3s are involved in elongation of the phagophore membrane, the GABARAP/GATE-16 subfamily is essential for a later stage in autophagosome maturation (PubMed:20713600).

LC3B: Ubiquitin-like modifier involved in formation of autophagosomal vacuoles (autophagosomes). Plays a role in mitophagy which contributes to regulate mitochondrial quantity and quality by eliminating the mitochondria to a basal level to fulfill cellular energy requirements and preventing excess ROS production. Whereas LC3s are involved in elongation of the phagophore membrane, the GABARAP/GATE-16 subfamily is essential for a later stage in autophagosome maturation. Promotes primary ciliogenesis by removing OFD1 from centriolar satellites via the autophagic pathway.