

Sumo 2/3 (3F7) Mouse mAb
Catalog # AP53522**Specification**

Sumo 2/3 (3F7) Mouse mAb - Product Information

Application	WB
Primary Accession	P61956 , P55854
Host	Mouse
Clonality	Monoclonal Antibody

Sumo 2/3 (3F7) Mouse mAb - Additional Information**Other Names**

HSMT3; SMT3B; SUMO3; Smt3A; SMT3H2; SMT3A; Smt3B; SMT3H1; SUMO-3

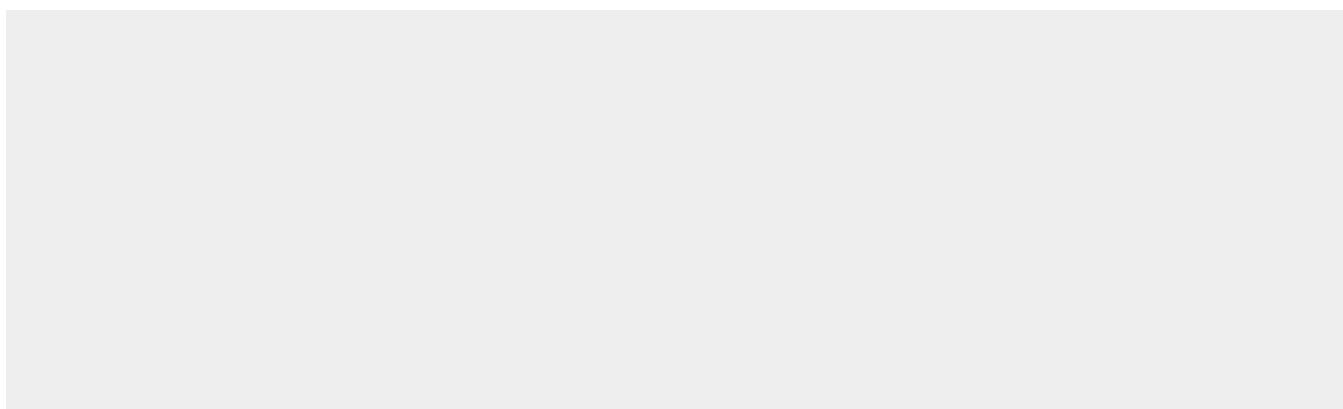
Dilution

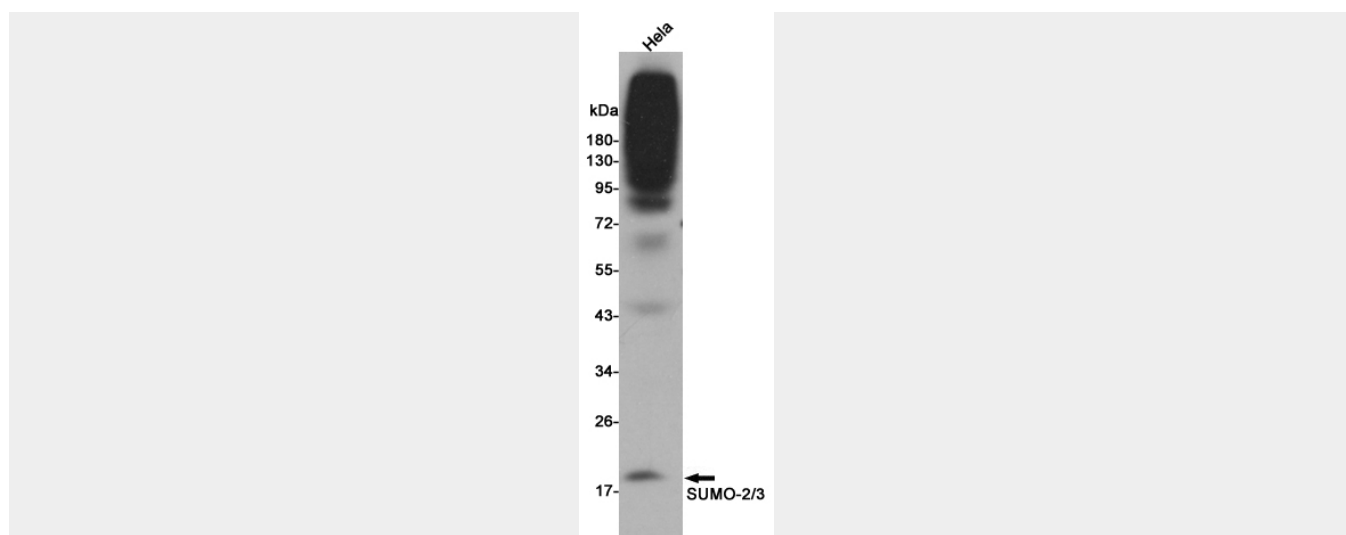
WB~~1:1000

Sumo 2/3 (3F7) Mouse mAb - Protein Information**Sumo 2/3 (3F7) Mouse mAb - Protocols**

Provided below are standard protocols that you may find useful for product applications.

- [Western Blot](#)
- [Blocking Peptides](#)
- [Dot Blot](#)
- [Immunohistochemistry](#)
- [Immunofluorescence](#)
- [Immunoprecipitation](#)
- [Flow Cytometry](#)
- [Cell Culture](#)

Sumo 2/3 (3F7) Mouse mAb - Images



Western blot detection of SUMO-2/3 in HeLa cell lysates using SUMO-2/3 mouse mAb(dilution 1:1000).

Sumo 2/3 (3F7) Mouse mAb - Background

Swiss-Prot Acc.P61956,P55854.SUMO proteins, such as Sumo 2 and Sumo 3, post-translationally modify numerous cellular proteins and affect their metabolism and function. However, unlike ubiquitination, which targets proteins for degradation, sumoylation participates in a number of cellular processes, such as nuclear transport, transcriptional regulation, apoptosis, and protein stability. Sumo 2 and Sumo 3 are highly homologous, hence it is very difficult to produce antibodies which distinguish them.