

Anti-Adenylate Cyclase 5/6 Antibody
Catalog # AP53655**Specification**

Anti-Adenylate Cyclase 5/6 Antibody - Product Information

Application	WB, IF
Primary Accession	O95622
Other Accession	O43306
Reactivity	Human, Mouse, Rat
Host	Rabbit
Clonality	Polyclonal
Calculated MW	138908

Anti-Adenylate Cyclase 5/6 Antibody - Additional Information**Gene ID** 111**Other Names**

ADCY5; Adenylate cyclase type 5; ATP pyrophosphate-lyase 5; Adenylate cyclase type V; Adenylyl cyclase 5; ADCY6; KIAA0422; Adenylate cyclase type 6; ATP pyrophosphate-lyase 6; Adenylate cyclase type VI; Adenylyl cyclase 6; Ca(2+)-inhibitable adenylyl cyclase

Target/Specificity

Recognizes endogenous levels of Adenylate Cyclase 5/6 protein.

Dilution

WB~~1/500 - 1/1000

IF~~1/50 - 1/200

Format

Liquid in 0.42% Potassium phosphate, 0.87% Sodium chloride, pH 7.3, 30% glycerol, and 0.09% (W/V) sodium azide.

Storage

Store at -20 °C.Stable for 12 months from date of receipt

Anti-Adenylate Cyclase 5/6 Antibody - Protein Information**Name** ADCY5**Function**

Catalyzes the formation of the signaling molecule cAMP in response to G-protein signaling (PubMed:15385642, PubMed:24700542, PubMed:26206488). Mediates signaling downstream of ADRB1 (PubMed:24700542). Regulates the increase of free cytosolic Ca(2+) in response to increased blood glucose levels and contributes

to the regulation of Ca(2+)-dependent insulin secretion (PubMed:24740569).

Cellular Location

Cell membrane; Multi-pass membrane protein. Cell projection, cilium {ECO:0000250|UniProtKB:P84309}

Tissue Location

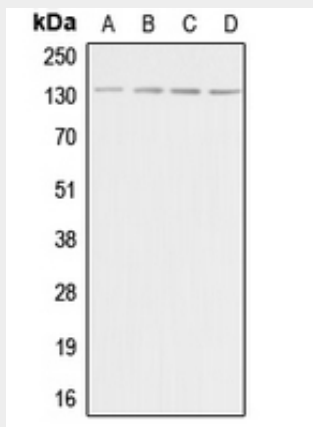
Detected in pancreas islets (at protein level). Expressed in the brain, with high expression in the corpus striatum (PubMed:26085604).

Anti-Adenylate Cyclase 5/6 Antibody - Protocols

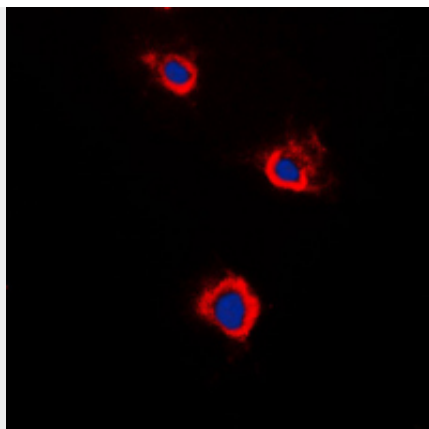
Provided below are standard protocols that you may find useful for product applications.

- [Western Blot](#)
- [Blocking Peptides](#)
- [Dot Blot](#)
- [Immunohistochemistry](#)
- [Immunofluorescence](#)
- [Immunoprecipitation](#)
- [Flow Cytometry](#)
- [Cell Culture](#)

Anti-Adenylate Cyclase 5/6 Antibody - Images



Western blot analysis of Adenylate Cyclase 5/6 expression in HeLa (A), Raw264.7 (B), PC12 (C), rat brain (D) whole cell lysates.



Immunofluorescent analysis of Adenylate Cyclase 5/6 staining in Raw264.7 cells. Formalin-fixed cells were permeabilized with 0.1% Triton X-100 in TBS for 5-10 minutes and blocked with 3% BSA-PBS for 30 minutes at room temperature. Cells were probed with the primary antibody in 3% BSA-PBS and incubated overnight at 4 °C in a humidified chamber. Cells were washed with PBST and incubated with a DyLight 594-conjugated secondary antibody (red) in PBS at room temperature in the dark. DAPI was used to stain the cell nuclei (blue).

Anti-Adenylate Cyclase 5/6 Antibody - Background

Rabbit polyclonal antibody to Adenylate Cyclase 5/6