

Anti-Aggrecan Antibody
Catalog # AP53656**Specification**

Anti-Aggrecan Antibody - Product Information

Application	WB, IHC
Primary Accession	P16112
Reactivity	Human, Mouse, Rat
Host	Rabbit
Clonality	Polyclonal
Calculated MW	261329

Anti-Aggrecan Antibody - Additional Information**Gene ID** 176**Other Names**

AGC1; CSPG1; MSK16; Aggrecan core protein; Cartilage-specific proteoglycan core protein; CSPCP; Chondroitin sulfate proteoglycan core protein 1; Chondroitin sulfate proteoglycan 1

Target/Specificity

Recognizes endogenous levels of Aggrecan protein.

Dilution

WB~~1/500 - 1/1000

IHC~~1:100~500

Format

Liquid in 0.42% Potassium phosphate, 0.87% Sodium chloride, pH 7.3, 30% glycerol, and 0.09% (W/V) sodium azide.

Storage

Store at -20 °C.Stable for 12 months from date of receipt

Anti-Aggrecan Antibody - Protein Information**Name** ACAN**Synonyms** AGC1, CSPG1, MSK16**Function**

This proteoglycan is a major component of extracellular matrix of cartilagenous tissues. A major function of this protein is to resist compression in cartilage. It binds avidly to hyaluronic acid via an N-terminal globular region.

Cellular Location

Secreted, extracellular space, extracellular matrix {ECO:0000250|UniProtKB:P07898}

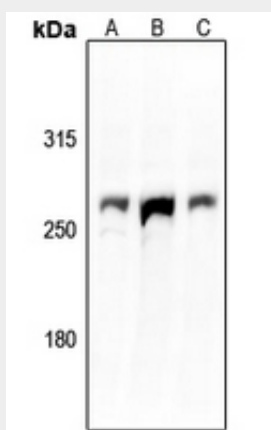
Tissue Location

Detected in fibroblasts (at protein level) (PubMed:36213313). Restricted to cartilage (PubMed:7524681)

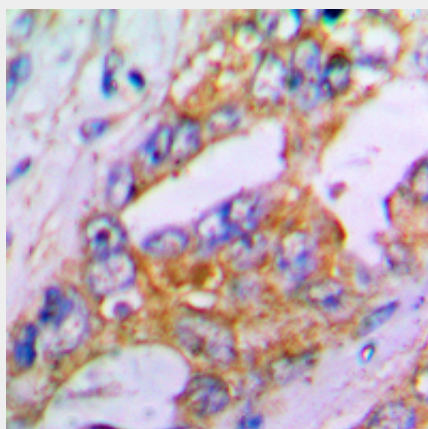
Anti-Aggrecan Antibody - Protocols

Provided below are standard protocols that you may find useful for product applications.

- [Western Blot](#)
- [Blocking Peptides](#)
- [Dot Blot](#)
- [Immunohistochemistry](#)
- [Immunofluorescence](#)
- [Immunoprecipitation](#)
- [Flow Cytometry](#)
- [Cell Culture](#)

Anti-Aggrecan Antibody - Images

Western blot analysis of Aggrecan expression in CT26 (A), C6 (B), HeLa (C) whole cell lysates.



Immunohistochemical analysis of Aggrecan staining in human lung cancer formalin fixed paraffin embedded tissue section. The section was pre-treated using heat mediated antigen retrieval with sodium citrate buffer (pH 6.0). The section was then incubated with the antibody at room temperature and detected using an HRP conjugated compact polymer system. DAB was used as the chromogen. The section was then counterstained with haematoxylin and mounted with DPX.

Anti-Aggrecan Antibody - Background

Rabbit polyclonal antibody to Aggrecan