

**Anti-C/EBP delta/epsilon Antibody**  
**Catalog # AP53659****Specification**

---

**Anti-C/EBP delta/epsilon Antibody - Product Information**

Application	WB, IF, IHC
Primary Accession	<a href="#">P49716</a>
Other Accession	<a href="#">Q15744</a>
Reactivity	Human, Mouse, Rat
Host	Rabbit
Clonality	Polyclonal
Calculated MW	28467

**Anti-C/EBP delta/epsilon Antibody - Additional Information****Gene ID** 1052**Other Names**

CEBPD; CCAAT/enhancer-binding protein delta; C/EBP delta; Nuclear factor NF-IL6-beta; NF-IL6-beta; CEBPE; CCAAT/enhancer-binding protein epsilon; C/EBP epsilon

**Target/Specificity**

Recognizes endogenous levels of C/EBP delta/epsilon protein.

**Dilution**

WB~~1/500 - 1/1000

IF~~1/50 - 1/200

IHC~~1:100~500

**Format**

Liquid in 0.42% Potassium phosphate, 0.87% Sodium chloride, pH 7.3, 30% glycerol, and 0.09% (W/V) sodium azide.

**Storage**

Store at -20 °C.Stable for 12 months from date of receipt

**Anti-C/EBP delta/epsilon Antibody - Protein Information****Name** CEBPD**Function**

Transcription activator that recognizes two different DNA motifs: the CCAAT homology common to many promoters and the enhanced core homology common to many enhancers (PubMed:<a href="http://www.uniprot.org/citations/16397300" target="\_blank">16397300</a>). Important transcription factor regulating the expression of genes involved in immune and inflammatory responses (PubMed:<a href="http://www.uniprot.org/citations/16397300" target="\_blank">16397300</a>, PubMed:<a href="http://www.uniprot.org/citations/1741402" target="\_blank">1741402</a>). Transcriptional activator that enhances IL6 transcription alone

and as heterodimer with CEBPB (PubMed: <a href="http://www.uniprot.org/citations/1741402" target="\_blank">1741402</a>).

#### Cellular Location

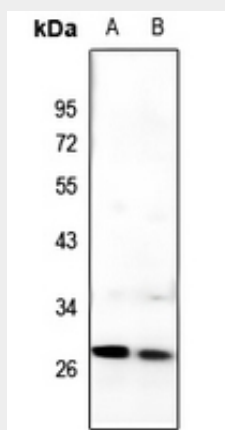
Nucleus.

#### Anti-C/EBP delta/epsilon Antibody - Protocols

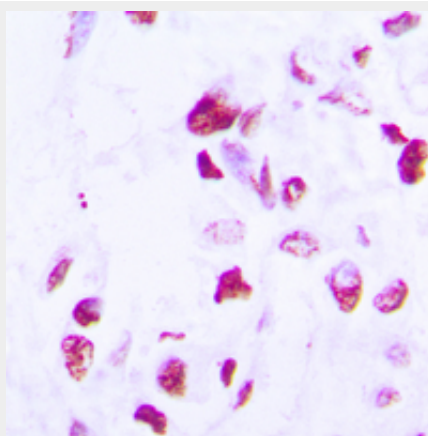
Provided below are standard protocols that you may find useful for product applications.

- [Western Blot](#)
- [Blocking Peptides](#)
- [Dot Blot](#)
- [Immunohistochemistry](#)
- [Immunofluorescence](#)
- [Immunoprecipitation](#)
- [Flow Cytometry](#)
- [Cell Culture](#)

#### Anti-C/EBP delta/epsilon Antibody - Images

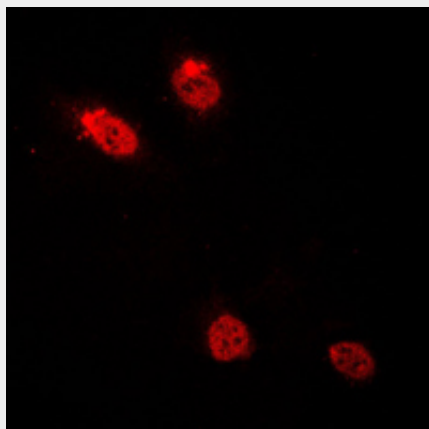


Western blot analysis of C/EBP delta/epsilon expression in CT26 (A), HeLa (B) whole cell lysates.



Immunohistochemical analysis of C/EBP delta/epsilon staining in human lung cancer formalin fixed paraffin embedded tissue section. The section was pre-treated using heat mediated antigen retrieval with sodium citrate buffer (pH 6.0). The section was then incubated with the antibody at

room temperature and detected using an HRP conjugated compact polymer system. DAB was used as the chromogen. The section was then counterstained with haematoxylin and mounted with DPX.



Immunofluorescent analysis of C/EBP delta/epsilon staining in HepG2 cells. Formalin-fixed cells were permeabilized with 0.1% Triton X-100 in TBS for 5-10 minutes and blocked with 3% BSA-PBS for 30 minutes at room temperature. Cells were probed with the primary antibody in 3% BSA-PBS and incubated overnight at 4 °C in a humidified chamber. Cells were washed with PBST and incubated with a DyLight 594-conjugated secondary antibody (red) in PBS at room temperature in the dark.

#### **Anti-C/EBP delta/epsilon Antibody - Background**

Rabbit polyclonal antibody to C/EBP delta/epsilon