

**TM2D3 Antibody (N-term)**  
**Affinity Purified Rabbit Polyclonal Antibody (Pab)**  
**Catalog # AP5366a****Specification**

---

**TM2D3 Antibody (N-term) - Product Information**

Application	WB,E
Primary Accession	<a href="#">O9BRN9</a>
Other Accession	<a href="#">NP_510883.2</a>
Reactivity	Human
Host	Rabbit
Clonality	Polyclonal
Isotype	Rabbit IgG
Calculated MW	27118
Antigen Region	22-50

**TM2D3 Antibody (N-term) - Additional Information****Gene ID** 80213**Other Names**

TM2 domain-containing protein 3, Beta-amyloid-binding protein-like protein 2, BBP-like protein 2, TM2D3, BLP2

**Target/Specificity**

This TM2D3 antibody is generated from rabbits immunized with a KLH conjugated synthetic peptide between 22-50 amino acids from the N-terminal region of human TM2D3.

**Dilution**

WB~~1:1000

E~~Use at an assay dependent concentration.

**Format**

Purified polyclonal antibody supplied in PBS with 0.09% (W/V) sodium azide. This antibody is purified through a protein A column, followed by peptide affinity purification.

**Storage**

Maintain refrigerated at 2-8°C for up to 2 weeks. For long term storage store at -20°C in small aliquots to prevent freeze-thaw cycles.

**Precautions**

TM2D3 Antibody (N-term) is for research use only and not for use in diagnostic or therapeutic procedures.

**TM2D3 Antibody (N-term) - Protein Information****Name** TM2D3

**Synonyms** BLP2**Function** Probable positive regulator of Notch signaling.**Cellular Location**

Membrane; Multi-pass membrane protein

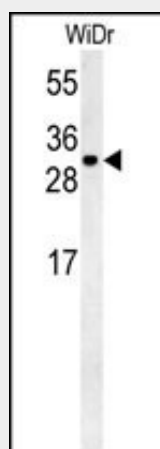
**Tissue Location**

Widely expressed..

**TM2D3 Antibody (N-term) - Protocols**

Provided below are standard protocols that you may find useful for product applications.

- [Western Blot](#)
- [Blocking Peptides](#)
- [Dot Blot](#)
- [Immunohistochemistry](#)
- [Immunofluorescence](#)
- [Immunoprecipitation](#)
- [Flow Cytometry](#)
- [Cell Culture](#)

**TM2D3 Antibody (N-term) - Images**

TM2D3 Antibody (N-term)(Cat. #AP5366a) western blot analysis in WiDr cell line lysates (35ug/lane). This demonstrates the TM2D3 antibody detected the TM2D3 protein (arrow).

**TM2D3 Antibody (N-term) - Background**

The protein encoded by this gene contains a structural module related to that of the seven transmembrane domain G protein-coupled receptor superfamily. This protein has sequence and structural similarities to the beta-amyloid binding protein (BBP), but, unlike BBP, it does not regulate a response to beta-amyloid peptide. This protein may have regulatory roles in cell death or proliferation signal cascades. Several alternatively spliced transcript variants of this gene are described but the full length nature of some variants has not been determined. Multiple polyadenylation sites have been found in this gene. [provided by

RefSeq].

### **TM2D3 Antibody (N-term) - References**

Mahr, S., et al. Am. J. Hum. Genet. 78(5):793-803(2006)

Kajkowski, E.M., et al. J. Biol. Chem. 276(22):18748-18756(2001)