

Anti-GAD1/2 Antibody
Catalog # AP53671**Specification**

Anti-GAD1/2 Antibody - Product Information

Application	WB, IHC
Primary Accession	Q99259
Other Accession	Q05329
Reactivity	Human, Mouse, Rat
Host	Rabbit
Clonality	Polyclonal
Calculated MW	66897

Anti-GAD1/2 Antibody - Additional Information**Gene ID** 2571**Other Names**

GAD1; GAD; GAD67; Glutamate decarboxylase 1; 67 kDa glutamic acid decarboxylase; GAD-67; Glutamate decarboxylase 67 kDa isoform; GAD2; GAD65; Glutamate decarboxylase 2; 65 kDa glutamic acid decarboxylase; GAD-65; Glutamate decarboxylase 65 kDa isoform

Target/Specificity

Recognizes endogenous levels of GAD1/2 protein.

Dilution

WB~~1/500 - 1/1000

IHC~~1:100~500

Format

Liquid in 0.42% Potassium phosphate, 0.87% Sodium chloride, pH 7.3, 30% glycerol, and 0.09% (W/V) sodium azide.

Storage

Store at -20 °C.Stable for 12 months from date of receipt

Anti-GAD1/2 Antibody - Protein Information**Name** GAD1 ([HGNC:4092](#))**Synonyms** GAD, GAD67**Function**

Catalyzes the synthesis of the inhibitory neurotransmitter gamma-aminobutyric acid (GABA) with pyridoxal 5'-phosphate as cofactor.

Tissue Location

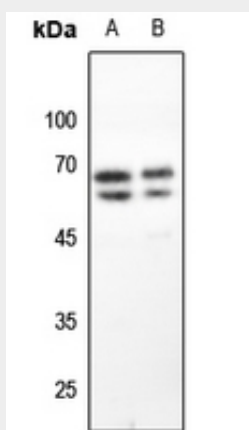
[Isoform 1]: Expressed in brain.

Anti-GAD1/2 Antibody - Protocols

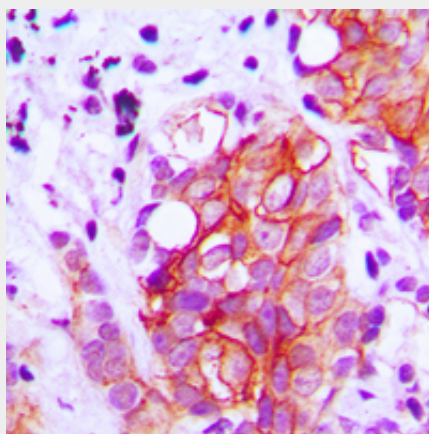
Provided below are standard protocols that you may find useful for product applications.

- [Western Blot](#)
- [Blocking Peptides](#)
- [Dot Blot](#)
- [Immunohistochemistry](#)
- [Immunofluorescence](#)
- [Immunoprecipitation](#)
- [Flow Cytometry](#)
- [Cell Culture](#)

Anti-GAD1/2 Antibody - Images



Western blot analysis of GAD1/2 expression in mouse brain (A), rat brain (B) whole cell lysates.



Immunohistochemical analysis of GAD1/2 staining in human breast cancer formalin fixed paraffin embedded tissue section. The section was pre-treated using heat mediated antigen retrieval with sodium citrate buffer (pH 6.0). The section was then incubated with the antibody at room temperature and detected using an HRP conjugated compact polymer system. DAB was used as the chromogen. The section was then counterstained with haematoxylin and mounted with DPX.

Anti-GAD1/2 Antibody - Background

Rabbit polyclonal antibody to GAD1/2