

Anti-Connexin 32 Antibody
Catalog # AP53672**Specification**

Anti-Connexin 32 Antibody - Product Information

Application	WB, IHC
Primary Accession	P08034
Reactivity	Human, Mouse, Rat
Host	Rabbit
Clonality	Polyclonal
Calculated MW	32025

Anti-Connexin 32 Antibody - Additional Information**Gene ID** 2705**Other Names**

CX32; Gap junction beta-1 protein; Connexin-32; Cx32; GAP junction 28 kDa liver protein

Target/Specificity

Recognizes endogenous levels of Connexin 32 protein.

Dilution

WB~~1/500 - 1/1000

IHC~~1:100~500

Format

Liquid in 0.42% Potassium phosphate, 0.87% Sodium chloride, pH 7.3, 30% glycerol, and 0.09% (W/V) sodium azide.

Storage

Store at -20 °C.Stable for 12 months from date of receipt

Anti-Connexin 32 Antibody - Protein Information**Name** GJB1**Synonyms** CX32**Function**

One gap junction consists of a cluster of closely packed pairs of transmembrane channels, the connexons, through which materials of low MW diffuse from one cell to a neighboring cell.

Cellular Location

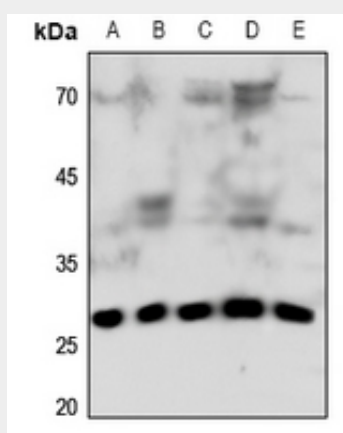
Cell membrane; Multi-pass membrane protein. Cell junction, gap junction

Anti-Connexin 32 Antibody - Protocols

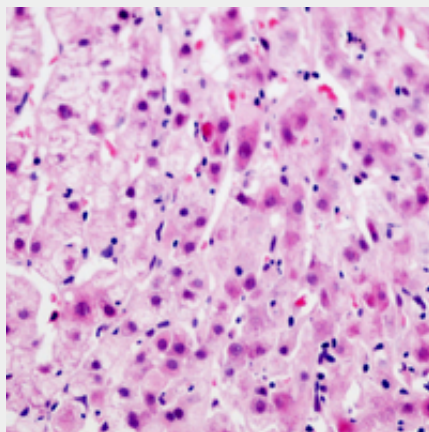
Provided below are standard protocols that you may find useful for product applications.

- [Western Blot](#)
- [Blocking Peptides](#)
- [Dot Blot](#)
- [Immunohistochemistry](#)
- [Immunofluorescence](#)
- [Immunoprecipitation](#)
- [Flow Cytometry](#)
- [Cell Culture](#)

Anti-Connexin 32 Antibody - Images



Western blot analysis of Connexin 32 expression in LOVO (A), mouse brain (B), mouse lung (C), mouse kidney (D), rat kidney (E) whole cell lysates.



Immunohistochemical analysis of Connexin 32 staining in human liver cancer formalin fixed paraffin embedded tissue section. The section was pre-treated using heat mediated antigen retrieval with sodium citrate buffer (pH 6.0). The section was then incubated with the antibody at room temperature and detected using an HRP conjugated compact polymer system. AEC was used as the chromogen. The section was then counterstained with haematoxylin and mounted with DPX.

Anti-Connexin 32 Antibody - Background

Rabbit polyclonal antibody to Connexin 32