

Anti-GPR20 Antibody
Catalog # AP53674**Specification**

Anti-GPR20 Antibody - Product Information

Application	WB, IHC
Primary Accession	Q99678
Reactivity	Human, Mouse, Rat
Host	Rabbit
Clonality	Polyclonal
Calculated MW	38650

Anti-GPR20 Antibody - Additional Information**Gene ID** 2843**Other Names**

G-protein coupled receptor 20

Target/Specificity

Recognizes endogenous levels of GPR20 protein.

Dilution

WB~~1/500 - 1/1000

IHC~~1:100~500

Format

Liquid in 0.42% Potassium phosphate, 0.87% Sodium chloride, pH 7.3, 30% glycerol, and 0.09% (W/V) sodium azide.

Storage

Store at -20 °C.Stable for 12 months from date of receipt

Anti-GPR20 Antibody - Protein Information**Name** GPR20**Function**

Orphan receptor with constitutive G(i) signaling activity that activate cyclic AMP.

Cellular Location

Cell membrane; Multi-pass membrane protein

Tissue Location

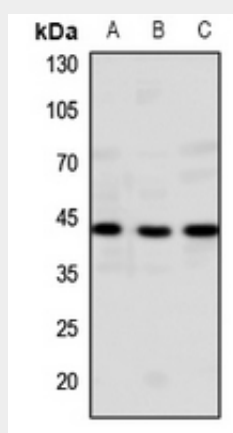
Ubiquitous with highest levels in intestinal tissues. In the brain detected in thalamus, putamen, and caudate, but not in frontal cortex, pons and hypothalamus

Anti-GPR20 Antibody - Protocols

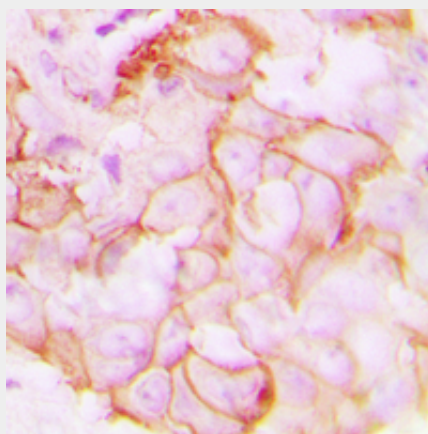
Provided below are standard protocols that you may find useful for product applications.

- [Western Blot](#)
- [Blocking Peptides](#)
- [Dot Blot](#)
- [Immunohistochemistry](#)
- [Immunofluorescence](#)
- [Immunoprecipitation](#)
- [Flow Cytometry](#)
- [Cell Culture](#)

Anti-GPR20 Antibody - Images



Western blot analysis of GPR20 expression in mouse brain (A), rat brain (B), rat lung (C) whole cell lysates.



Immunohistochemical analysis of GPR20 staining in human breast cancer formalin fixed paraffin embedded tissue section. The section was pre-treated using heat mediated antigen retrieval with sodium citrate buffer (pH 6.0). The section was then incubated with the antibody at room temperature and detected using an HRP conjugated compact polymer system. DAB was used as the chromogen. The section was then counterstained with haematoxylin and mounted with DPX.

Anti-GPR20 Antibody - Background

Rabbit polyclonal antibody to GPR20