

Anti-Histone H1 Antibody
Catalog # AP53678**Specification**

Anti-Histone H1 Antibody - Product Information

Application	WB, IH, IF
Primary Accession	P16401
Other Accession	P16402 , P10412
Reactivity	Human, Mouse, Rat
Host	Rabbit
Clonality	Polyclonal
Calculated MW	22580

Anti-Histone H1 Antibody - Additional Information**Gene ID** 3009**Other Names**

HIST1H1B; H1F5; Histone H1.5; Histone H1a; Histone H1b; Histone H1s-3; HIST1H1D; H1F3; Histone H1.3; Histone H1c; Histone H1s-2; HIST1H1E; H1F4; Histone H1.4; Histone H1b; Histone H1s-4

Target/Specificity

Recognizes endogenous levels of Histone H1 protein.

Dilution

WB~~1/500 - 1/1000

IH~~1/50 - 1/200

IF~~1/50 - 1/200

Format

Liquid in 0.42% Potassium phosphate, 0.87% Sodium chloride, pH 7.3, 30% glycerol, and 0.09% (W/V) sodium azide.

Storage

Store at -20 °C.Stable for 12 months from date of receipt

Anti-Histone H1 Antibody - Protein Information**Name** H1-5 ([HGNC:4719](#))**Function**

Histone H1 protein binds to linker DNA between nucleosomes forming the macromolecular structure known as the chromatin fiber. Histones H1 are necessary for the condensation of nucleosome chains into higher-order structured fibers. Acts also as a regulator of individual gene transcription through chromatin remodeling, nucleosome spacing and DNA methylation (By similarity).

Cellular Location

Nucleus. Chromosome. Note=Mainly localizes with heterochromatin (PubMed:15911621). Associates with actively transcribed chromatin and not heterochromatin (PubMed:10997781)

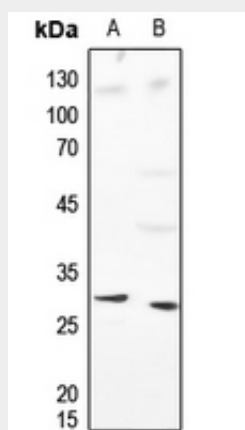
Tissue Location

Ubiquitous. Expressed in the majority of the cell lines tested and in testis.

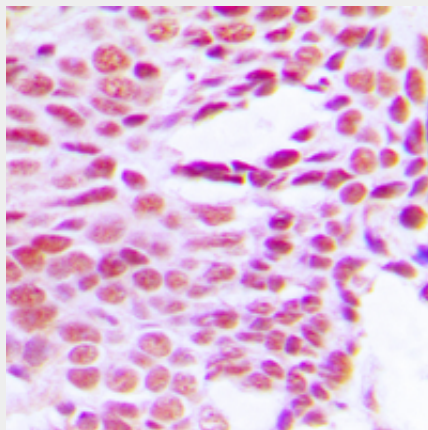
Anti-Histone H1 Antibody - Protocols

Provided below are standard protocols that you may find useful for product applications.

- [Western Blot](#)
- [Blocking Peptides](#)
- [Dot Blot](#)
- [Immunohistochemistry](#)
- [Immunofluorescence](#)
- [Immunoprecipitation](#)
- [Flow Cytometry](#)
- [Cell Culture](#)

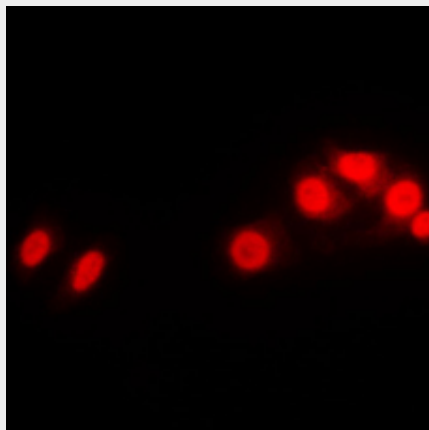
Anti-Histone H1 Antibody - Images

Western blot analysis of Histone H1 expression in mouse kidney (A), rat kidney (B) whole cell lysates.



Immunohistochemical analysis of Histone H1 staining in human breast cancer formalin fixed

paraffin embedded tissue section. The section was pre-treated using heat mediated antigen retrieval with sodium citrate buffer (pH 6.0). The section was then incubated with the antibody at room temperature and detected using an HRP conjugated compact polymer system. DAB was used as the chromogen. The section was then counterstained with haematoxylin and mounted with DPX.



Immunofluorescent analysis of Histone H1 staining in Raw264.7 cells. Formalin-fixed cells were permeabilized with 0.1% Triton X-100 in TBS for 5-10 minutes and blocked with 3% BSA-PBS for 30 minutes at room temperature. Cells were probed with the primary antibody in 3% BSA-PBS and incubated overnight at 4 °C in a humidified chamber. Cells were washed with PBST and incubated with a DyLight 594-conjugated secondary antibody (red) in PBS at room temperature in the dark.

Anti-Histone H1 Antibody - Background

Rabbit polyclonal antibody to Histone H1