

Anti-PDE4B/C/D Antibody
Catalog # AP53693**Specification**

Anti-PDE4B/C/D Antibody - Product Information

Application	WB, IHC
Primary Accession	Q07343
Other Accession	Q08493 , Q08499
Reactivity	Human
Host	Rabbit
Clonality	Polyclonal
Calculated MW	83343

Anti-PDE4B/C/D Antibody - Additional Information**Gene ID** 5142**Other Names**

PDE4B; DPDE4; cAMP-specific 3', 5'-cyclic phosphodiesterase 4B; DPDE4; PDE32; PDE4C; DPDE1; cAMP-specific 3', 5'-cyclic phosphodiesterase 4C; DPDE1; PDE21; PDE4D; DPDE3; cAMP-specific 3', 5'-cyclic phosphodiesterase 4D; DPDE3; PDE43

Target/Specificity

Recognizes endogenous levels of PDE4B/C/D protein.

Dilution

WB~~1/500 - 1/1000

IHC~~1:100~500

Format

Liquid in 0.42% Potassium phosphate, 0.87% Sodium chloride, pH 7.3, 30% glycerol, and 0.09% (W/V) sodium azide.

Storage

Store at -20 °C.Stable for 12 months from date of receipt

Anti-PDE4B/C/D Antibody - Protein Information**Name** PDE4B ([HGNC:8781](#))**Synonyms** DPDE4**Function**

Hydrolyzes the second messenger cAMP, which is a key regulator of many important physiological processes (PubMed:15260978). May be involved in mediating central nervous system effects of therapeutic agents ranging from antidepressants to antiasthmatic and anti-inflammatory agents.

Cellular Location

[Isoform PDE4B5]: Cytoplasm. Cell membrane

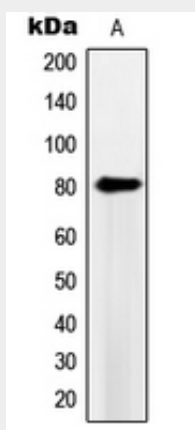
Tissue Location

Expressed in brain, heart, lung and skeletal muscle (PubMed:17519386). Expressed in white blood cells (PubMed:8392015)

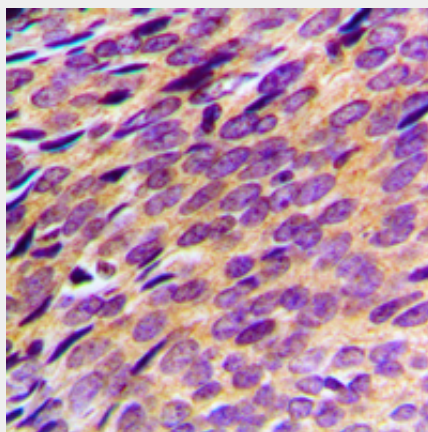
Anti-PDE4B/C/D Antibody - Protocols

Provided below are standard protocols that you may find useful for product applications.

- [Western Blot](#)
- [Blocking Peptides](#)
- [Dot Blot](#)
- [Immunohistochemistry](#)
- [Immunofluorescence](#)
- [Immunoprecipitation](#)
- [Flow Cytometry](#)
- [Cell Culture](#)

Anti-PDE4B/C/D Antibody - Images

Western blot analysis of PDE4B/C/D expression in HeLa (A) whole cell lysates.



Immunohistochemical analysis of PDE4B/C/D staining in human breast cancer formalin fixed paraffin embedded tissue section. The section was pre-treated using heat mediated antigen

retrieval with sodium citrate buffer (pH 6.0). The section was then incubated with the antibody at room temperature and detected using an HRP conjugated compact polymer system. DAB was used as the chromogen. The section was then counterstained with haematoxylin and mounted with DPX.

Anti-PDE4B/C/D Antibody - Background

Rabbit polyclonal antibody to PDE4B/C/D