

**Anti-ARD1 Antibody**  
**Catalog # AP53696****Specification**

---

**Anti-ARD1 Antibody - Product Information**

Application	WB
Primary Accession	<a href="#">Q12972</a>
Reactivity	Human, Mouse, Rat
Host	Rabbit
Clonality	Polyclonal
Calculated MW	38479

**Anti-ARD1 Antibody - Additional Information****Gene ID** 5511**Other Names**

ARD1; NIPP1; Nuclear inhibitor of protein phosphatase 1; NIPP-1; Protein phosphatase 1 regulatory inhibitor subunit 8

**Target/Specificity**

Recognizes endogenous levels of ARD1 protein.

**Dilution**

WB~~1/500 - 1/1000

**Format**

Liquid in 0.42% Potassium phosphate, 0.87% Sodium chloride, pH 7.3, 30% glycerol, and 0.09% (W/V) sodium azide.

**Storage**

Store at -20 °C.Stable for 12 months from date of receipt

**Anti-ARD1 Antibody - Protein Information****Name** PPP1R8**Synonyms** ARD1, NIPP1**Function**

Inhibitor subunit of the major nuclear protein phosphatase-1 (PP-1). It has RNA-binding activity but does not cleave RNA and may target PP-1 to RNA-associated substrates. May also be involved in pre- mRNA splicing. Binds DNA and might act as a transcriptional repressor. Seems to be required for cell proliferation.

**Cellular Location**

Nucleus. Nucleus speckle. Note=Primarily, but not exclusively, nuclear

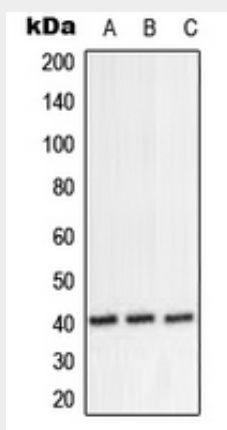
**Tissue Location**

Ubiquitously expressed, with highest levels in heart and skeletal muscle, followed by brain, placenta, lung, liver and pancreas. Less abundant in kidney. The concentration and ratio between isoforms is cell-type dependent. Isoform Alpha (>90%) and isoform Beta were found in brain, heart and kidney. Isoform Gamma is mainly found in B-cells and T-lymphocytes, and has been found in 293 embryonic kidney cells.

**Anti-ARD1 Antibody - Protocols**

Provided below are standard protocols that you may find useful for product applications.

- [Western Blot](#)
- [Blocking Peptides](#)
- [Dot Blot](#)
- [Immunohistochemistry](#)
- [Immunofluorescence](#)
- [Immunoprecipitation](#)
- [Flow Cytometry](#)
- [Cell Culture](#)

**Anti-ARD1 Antibody - Images**

Western blot analysis of ARD1 expression in HeLa (A), SP2/0 (B), H9C2 (C) whole cell lysates.

**Anti-ARD1 Antibody - Background**

Rabbit polyclonal antibody to ARD1