

**Anti-Spasmolysin Antibody**  
**Catalog # AP53706****Specification**

---

**Anti-Spasmolysin Antibody - Product Information**

Application	WB
Primary Accession	<a href="#">Q03403</a>
Reactivity	Human, Mouse, Rat
Host	Rabbit
Clonality	Polyclonal
Calculated MW	14284

**Anti-Spasmolysin Antibody - Additional Information****Gene ID** 7032**Other Names**

SML1; Trefoil factor 2; Spasmolysin; Spasmolytic polypeptide; SP

**Target/Specificity**

Recognizes endogenous levels of Spasmolysin protein.

**Dilution**

WB~~1/500 - 1/1000

**Format**

Liquid in 0.42% Potassium phosphate, 0.87% Sodium chloride, pH 7.3, 30% glycerol, and 0.09% (W/V) sodium azide.

**Storage**

Store at -20 °C.Stable for 12 months from date of receipt

**Anti-Spasmolysin Antibody - Protein Information****Name** TFF2**Synonyms** SML1**Function**

Inhibits gastrointestinal motility and gastric acid secretion. Could function as a structural component of gastric mucus, possibly by stabilizing glycoproteins in the mucus gel through interactions with carbohydrate side chains (By similarity).

**Cellular Location**

Secreted.

**Tissue Location**

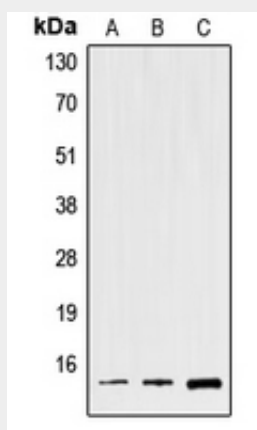
Stomach.

## Anti-Spasmolysin Antibody - Protocols

Provided below are standard protocols that you may find useful for product applications.

- [Western Blot](#)
- [Blocking Peptides](#)
- [Dot Blot](#)
- [Immunohistochemistry](#)
- [Immunofluorescence](#)
- [Immunoprecipitation](#)
- [Flow Cytometry](#)
- [Cell Culture](#)

## Anti-Spasmolysin Antibody - Images



Western blot analysis of Spasmolysin expression in HEK293T (A), Raw264.7 (B), rat liver (C) whole cell lysates.

## Anti-Spasmolysin Antibody - Background

Rabbit polyclonal antibody to Spasmolysin