

**Anti-UBE2A/B Antibody**  
**Catalog # AP53708****Specification****Anti-UBE2A/B Antibody - Product Information**

Application	WB
Primary Accession	<a href="#">P49459</a>
Other Accession	<a href="#">P63146</a>
Reactivity	Human, Mouse, Rat
Host	Rabbit
Clonality	Polyclonal
Calculated MW	17315

**Anti-UBE2A/B Antibody - Additional Information****Gene ID** 7319**Other Names**

UBE2A; RAD6A; Ubiquitin-conjugating enzyme E2 A; RAD6 homolog A; HR6A; hHR6A; Ubiquitin carrier protein A; Ubiquitin-protein ligase A; UBE2B; RAD6B; Ubiquitin-conjugating enzyme E2 B; RAD6 homolog B; HR6B; hHR6B; Ubiquitin carrier protein B; Ubiquitin-conjugating enzyme E2-17 kDa; Ubiquitin-protein ligase B

**Target/Specificity**

Recognizes endogenous levels of UBE2A/B protein.

**Dilution**

WB~~1/500 - 1/1000

**Format**

Liquid in 0.42% Potassium phosphate, 0.87% Sodium chloride, pH 7.3, 30% glycerol, and 0.09% (W/V) sodium azide.

**Storage**

Store at -20 °C.Stable for 12 months from date of receipt

**Anti-UBE2A/B Antibody - Protein Information****Name** UBE2A {ECO:0000303|PubMed:23685073, ECO:0000312|HGNC:HGNC:12472}**Function**

E2 ubiquitin-conjugating enzyme that accepts ubiquitin from the ubiquitin-activating enzyme E1 and transfers it to a E3 ubiquitin- protein ligase (PubMed:<a href="http://www.uniprot.org/citations/16337599" target="\_blank">16337599</a>, PubMed:<a href="http://www.uniprot.org/citations/20061386" target="\_blank">20061386</a>, PubMed:<a href="http://www.uniprot.org/citations/23685073" target="\_blank">23685073</a>, PubMed:<a href="http://www.uniprot.org/citations/25582440" target="\_blank">25582440</a>, PubMed:<a href="http://www.uniprot.org/citations/38297121" target="\_blank">38297121</a>). In vitro

catalyzes 'Lys-11', as well as 'Lys-48'-linked polyubiquitination (PubMed:<a href="http://www.uniprot.org/citations/20061386" target="\_blank">20061386</a>). Together with the E3 enzyme BRE1 (RNF20 and/or RNF40), plays a role in transcription regulation by catalyzing the monoubiquitination of histone H2B at 'Lys- 120' to form H2BK120ub1 (PubMed:<a href="http://www.uniprot.org/citations/16337599" target="\_blank">16337599</a>). H2BK120ub1 gives a specific tag for epigenetic transcriptional activation, elongation by RNA polymerase II, telomeric silencing, and is also a prerequisite for H3K4me and H3K79me formation (PubMed:<a href="http://www.uniprot.org/citations/16337599" target="\_blank">16337599</a>). Involved in mitophagy by acting as a E2 ubiquitin-conjugating enzyme for PRKN (PubMed:<a href="http://www.uniprot.org/citations/23685073" target="\_blank">23685073</a>). In association with the E3 enzyme UBR4, is involved in N-end rule-dependent protein degradation (PubMed:<a href="http://www.uniprot.org/citations/38182926" target="\_blank">38182926</a>). In association with the E3 ubiquitin-protein ligase complex SIFI, inhibits the mitochondrial stress response by acting as a E2 ubiquitin- conjugating enzyme for UBR4 and KCMF1 (PubMed:<a href="http://www.uniprot.org/citations/38297121" target="\_blank">38297121</a>).

### Cellular Location

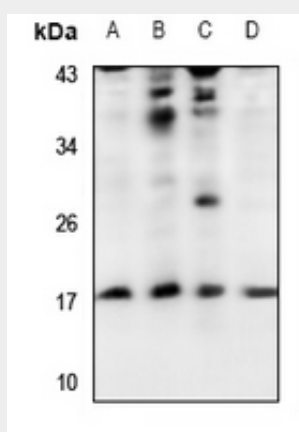
Late endosome. Lysosome

### Anti-UBE2A/B Antibody - Protocols

Provided below are standard protocols that you may find useful for product applications.

- [Western Blot](#)
- [Blocking Peptides](#)
- [Dot Blot](#)
- [Immunohistochemistry](#)
- [Immunofluorescence](#)
- [Immunoprecipitation](#)
- [Flow Cytometry](#)
- [Cell Culture](#)

### Anti-UBE2A/B Antibody - Images



Western blot analysis of UBE2A/B expression in MCF7 (A), A549 (B), C6 (C), MEF (D) whole cell lysates.

### Anti-UBE2A/B Antibody - Background

Rabbit polyclonal antibody to UBE2A/B