

IFT43 Antibody (Center)
Affinity Purified Rabbit Polyclonal Antibody (Pab)
Catalog # AP5370c**Specification**

IFT43 Antibody (Center) - Product Information

Application	WB, IHC-P, FC,E
Primary Accession	Q96FT9
Other Accession	Q9DA69 , Q2TBN9 , NP_001096034.1 , NP_443105.2
Reactivity	Human, Mouse
Predicted	Bovine
Host	Rabbit
Clonality	Polyclonal
Isotype	Rabbit IgG
Antigen Region	145-171

IFT43 Antibody (Center) - Additional Information**Gene ID** 112752**Other Names**

Intraflagellar transport protein 43 homolog, IFT43, C14orf179

Target/Specificity

This C14orf179 antibody is generated from rabbits immunized with a KLH conjugated synthetic peptide between 145-171 amino acids from the Central region of human C14orf179.

Dilution

WB~~1:1000

IHC-P~~1:50~100

FC~~1:10~50

E~~Use at an assay dependent concentration.

Format

Purified polyclonal antibody supplied in PBS with 0.09% (W/V) sodium azide. This antibody is purified through a protein A column, followed by peptide affinity purification.

Storage

Maintain refrigerated at 2-8°C for up to 2 weeks. For long term storage store at -20°C in small aliquots to prevent freeze-thaw cycles.

Precautions

IFT43 Antibody (Center) is for research use only and not for use in diagnostic or therapeutic procedures.

IFT43 Antibody (Center) - Protein Information

Name IFT43 ([HGNC:29669](#))

Synonyms C14orf179

Function As a component of IFT complex A (IFT-A), a complex required for retrograde ciliary transport and entry into cilia of G protein- coupled receptors (GPCRs), it is involved in ciliogenesis (PubMed:[28400947](#), PubMed:[28973684](#)). Involved in retrograde ciliary transport along microtubules from the ciliary tip to the base (PubMed:[21378380](#)).

Cellular Location

Cytoplasm, cytoskeleton. Cell projection, cilium Note=Associated with microtubules (PubMed:22361696). Localized at the distal tip of the cilium (PubMed:28973684)

Tissue Location

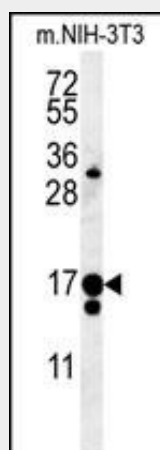
Expressed in the retina, predominantly in the photoreceptor outer segment.

IFT43 Antibody (Center) - Protocols

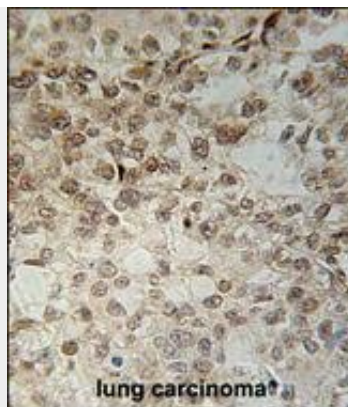
Provided below are standard protocols that you may find useful for product applications.

- [Western Blot](#)
- [Blocking Peptides](#)
- [Dot Blot](#)
- [Immunohistochemistry](#)
- [Immunofluorescence](#)
- [Immunoprecipitation](#)
- [Flow Cytometry](#)
- [Cell Culture](#)

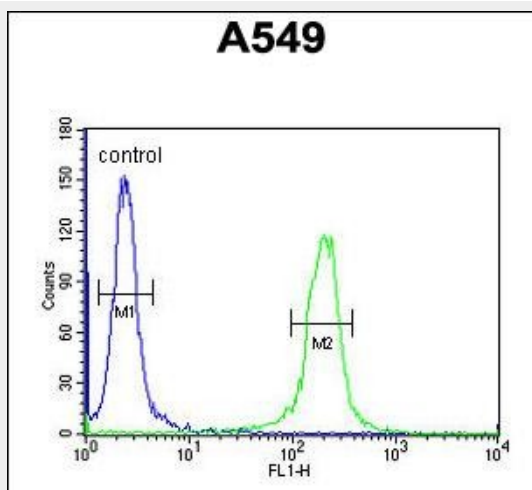
IFT43 Antibody (Center) - Images



C14orf179 Antibody (Center)(Cat. #AP5370c) western blot analysis in mouse NIH-3T3 cell line lysates (35ug/lane). This demonstrates the C14orf179 antibody detected the C14orf179 protein (arrow).



C14orf179 Antibody (Center) (Cat. #AP5370c) immunohistochemistry analysis in formalin fixed and paraffin embedded human lung carcinoma followed by peroxidase conjugation of the secondary antibody and DAB staining. This data demonstrates the use of the C14orf179 Antibody (Center) for immunohistochemistry. Clinical relevance has not been evaluated.



C14orf179 Antibody (Center) (Cat. #AP5370c) flow cytometric analysis of A549 cells (right histogram) compared to a negative control cell (left histogram). FITC-conjugated goat-anti-rabbit secondary antibodies were used for the analysis.

IFT43 Antibody (Center) - References

Levy, D., et al. BMC Med. Genet. 8 SUPPL 1, S3 (2007) :
Heilig, R., et al. Nature 421(6923):601-607(2003)