

Anti-SLC25A11 Antibody
Catalog # AP53711**Specification**

Anti-SLC25A11 Antibody - Product Information

Application	WB
Primary Accession	Q02978
Reactivity	Human, Mouse, Rat
Host	Rabbit
Clonality	Polyclonal
Calculated MW	34062

Anti-SLC25A11 Antibody - Additional Information**Gene ID** 8402**Other Names**

SLC20A4; Mitochondrial 2-oxoglutarate/malate carrier protein; OGCP; Solute carrier family 25 member 11

Target/Specificity

Recognizes endogenous levels of SLC25A11 protein.

Dilution

WB~~1/500 - 1/1000

Format

Liquid in 0.42% Potassium phosphate, 0.87% Sodium chloride, pH 7.3, 30% glycerol, and 0.09% (W/V) sodium azide.

Storage

Store at -20 °C.Stable for 12 months from date of receipt

Anti-SLC25A11 Antibody - Protein Information**Name** SLC25A11**Synonyms** SLC20A4**Function**

Catalyzes the transport of 2-oxoglutarate (alpha- oxoglutarate) across the inner mitochondrial membrane in an electroneutral exchange for malate. Can also exchange 2-oxoglutarate for other dicarboxylic acids such as malonate, succinate, maleate and oxaloacetate, although with lower affinity. Contributes to several metabolic processes, including the malate-aspartate shuttle, the oxoglutarate/isocitrate shuttle, in gluconeogenesis from lactate, and in nitrogen metabolism (By similarity). Maintains mitochondrial fusion and fission events, and the organization and morphology of cristae (PubMed:21448454). Involved in the regulation of apoptosis (By similarity). Helps

protect from cytotoxic-induced apoptosis by modulating glutathione levels in mitochondria (By similarity).

Cellular Location

Mitochondrion inner membrane {ECO:0000250|UniProtKB:P97700}; Multi-pass membrane protein {ECO:0000250|UniProtKB:P97700}

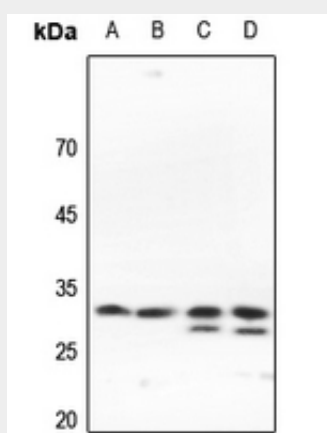
Tissue Location

Most highly expressed in the heart.

Anti-SLC25A11 Antibody - Protocols

Provided below are standard protocols that you may find useful for product applications.

- [Western Blot](#)
- [Blocking Peptides](#)
- [Dot Blot](#)
- [Immunohistochemistry](#)
- [Immunofluorescence](#)
- [Immunoprecipitation](#)
- [Flow Cytometry](#)
- [Cell Culture](#)

Anti-SLC25A11 Antibody - Images

Western blot analysis of SLC25A11 expression in HEK293T (A), Hela (B), rat kidney (C), rat spleen (D) whole cell lysates.

Anti-SLC25A11 Antibody - Background

Rabbit polyclonal antibody to SLC25A11