

Anti-NCKX1 Antibody
Catalog # AP53719**Specification****Anti-NCKX1 Antibody - Product Information**

Application	WB, IF
Primary Accession	O60721
Reactivity	Human, Mouse, Rat
Host	Rabbit
Clonality	Polyclonal
Calculated MW	121374

Anti-NCKX1 Antibody - Additional Information**Gene ID** 9187**Other Names**

KIAA0702; NCKX1; Sodium/potassium/calcium exchanger 1; Na(+)/K(+)/Ca(2+)-exchange protein 1; Retinal rod Na-Ca+K exchanger; Solute carrier family 24 member 1

Target/Specificity

Recognizes endogenous levels of NCKX1 protein.

Dilution

WB~~1/500 - 1/1000

IF~~1/50 - 1/200

Format

Liquid in 0.42% Potassium phosphate, 0.87% Sodium chloride, pH 7.3, 30% glycerol, and 0.09% (W/V) sodium azide.

Storage

Store at -20 °C.Stable for 12 months from date of receipt

Anti-NCKX1 Antibody - Protein Information**Name** SLC24A1 {ECO:0000303|PubMed:20850105, ECO:0000312|HGNC:HGNC:10975}**Function**

Calcium, potassium:sodium antiporter that transports 1 Ca(2+) and 1 K(+) in exchange for 4 Na(+) (PubMed:26631410). Critical component of the visual transduction cascade, controlling the calcium concentration of outer segments during light and darkness (PubMed:20850105). Light causes a rapid lowering of cytosolic free calcium in the outer segment of both retinal rod and cone photoreceptors and the light-induced lowering of calcium is caused by extrusion via this protein which plays a key role in the process of light adaptation (PubMed:20850105).

Cellular Location

Cell membrane; Multi-pass membrane protein

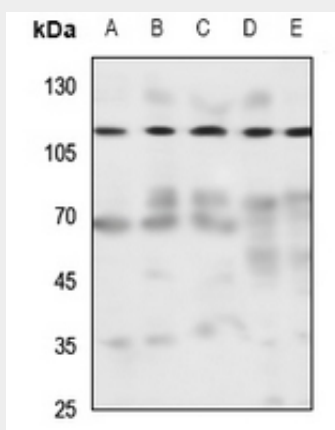
Tissue Location

Expressed in the retina, particularly in the inner segment, outer and inner nuclear layers, and ganglion cell layer

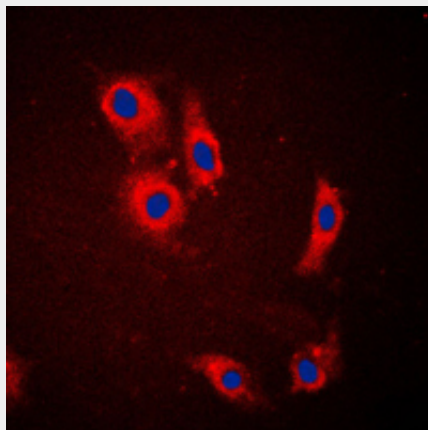
Anti-NCKX1 Antibody - Protocols

Provided below are standard protocols that you may find useful for product applications.

- [Western Blot](#)
- [Blocking Peptides](#)
- [Dot Blot](#)
- [Immunohistochemistry](#)
- [Immunofluorescence](#)
- [Immunoprecipitation](#)
- [Flow Cytometry](#)
- [Cell Culture](#)

Anti-NCKX1 Antibody - Images

Western blot analysis of NCKX1 expression in Hela (A), H446 (B), H1688 (C), mouse testis (D), rat testis (E) whole cell lysates.



Immunofluorescent analysis of NCKX1 staining in HeLa cells. Formalin-fixed cells were

permeabilized with 0.1% Triton X-100 in TBS for 5-10 minutes and blocked with 3% BSA-PBS for 30 minutes at room temperature. Cells were probed with the primary antibody in 3% BSA-PBS and incubated overnight at 4 °C in a humidified chamber. Cells were washed with PBST and incubated with a DyLight 594-conjugated secondary antibody (red) in PBS at room temperature in the dark. DAPI was used to stain the cell nuclei (blue).

Anti-NCKX1 Antibody - Background

Rabbit polyclonal antibody to NCKX1