

Anti-PSMD6 Antibody
Catalog # AP53722**Specification**

Anti-PSMD6 Antibody - Product Information

Application	WB, IHC
Primary Accession	Q15008
Reactivity	Human, Mouse, Rat
Host	Rabbit
Clonality	Polyclonal
Calculated MW	45531

Anti-PSMD6 Antibody - Additional Information**Gene ID** 9861**Other Names**

KIAA0107; PFAAP4; 26S proteasome non-ATPase regulatory subunit 6; 26S proteasome regulatory subunit RPN7; 26S proteasome regulatory subunit S10; Breast cancer-associated protein SGA-113M; Phosphonoformate immuno-associated protein 4; Proteasome regulatory particle subunit p44S10; p42A

Target/Specificity

Recognizes endogenous levels of PSMD6 protein.

Dilution

WB~~1/500 - 1/1000

IHC~~1:100~500

Format

Liquid in 0.42% Potassium phosphate, 0.87% Sodium chloride, pH 7.3, 30% glycerol, and 0.09% (W/V) sodium azide.

Storage

Store at -20 °C.Stable for 12 months from date of receipt

Anti-PSMD6 Antibody - Protein Information**Name** PSMD6**Synonyms** KIAA0107, PFAAP4**Function**

Component of the 26S proteasome, a multiprotein complex involved in the ATP-dependent degradation of ubiquitinated proteins. This complex plays a key role in the maintenance of protein homeostasis by removing misfolded or damaged proteins, which could impair cellular functions, and by removing proteins whose functions are no longer required. Therefore, the proteasome participates in numerous cellular processes, including cell cycle progression, apoptosis, or DNA

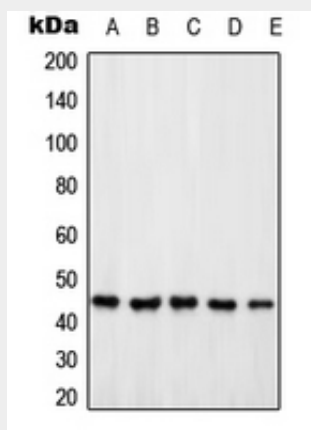
damage repair.

Anti-PSMD6 Antibody - Protocols

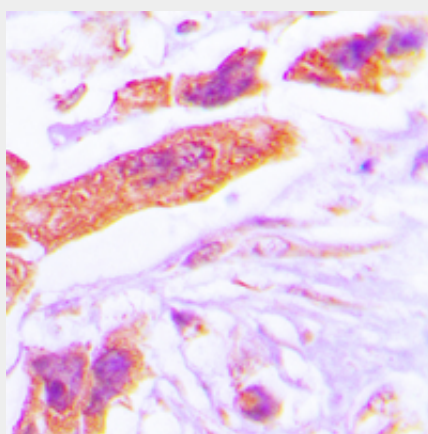
Provided below are standard protocols that you may find useful for product applications.

- [Western Blot](#)
- [Blocking Peptides](#)
- [Dot Blot](#)
- [Immunohistochemistry](#)
- [Immunofluorescence](#)
- [Immunoprecipitation](#)
- [Flow Cytometry](#)
- [Cell Culture](#)

Anti-PSMD6 Antibody - Images



Western blot analysis of PSMD6 expression in HeLa (A), Jurkat (B), HEK293T (C), SP2/0 (D), PC12 (E) whole cell lysates.



Immunohistochemical analysis of PSMD6 staining in human lung cancer formalin fixed paraffin embedded tissue section. The section was pre-treated using heat mediated antigen retrieval with sodium citrate buffer (pH 6.0). The section was then incubated with the antibody at room temperature and detected using an HRP conjugated compact polymer system. DAB was used as the chromogen. The section was then counterstained with haematoxylin and mounted with DPX.

Anti-PSMD6 Antibody - Background

Rabbit polyclonal antibody to PSMD6