

Anti-HPGDS Antibody
Catalog # AP53731**Specification**

Anti-HPGDS Antibody - Product Information

Application	WB
Primary Accession	O60760
Reactivity	Human, Mouse, Rat
Host	Rabbit
Clonality	Polyclonal
Calculated MW	23344

Anti-HPGDS Antibody - Additional Information**Gene ID** 27306**Other Names**

GSTS; PGDS; PTGDS2; Hematopoietic prostaglandin D synthase; H-PGDS; GST class-sigma; Glutathione S-transferase; Glutathione-dependent PGD synthase; Glutathione-requiring prostaglandin D synthase; Prostaglandin-H2 D-isomerase

Target/Specificity

Recognizes endogenous levels of HPGDS protein.

Dilution

WB~~1/500 - 1/1000

Format

Liquid in 0.42% Potassium phosphate, 0.87% Sodium chloride, pH 7.3, 30% glycerol, and 0.09% (W/V) sodium azide.

Storage

Store at -20 °C.Stable for 12 months from date of receipt

Anti-HPGDS Antibody - Protein Information**Name** HPGDS ([HGNC:17890](#))**Synonyms** GSTS, PGDS, PTGDS2**Function**

Bifunctional enzyme which catalyzes both the conversion of PGH2 to PGD2, a prostaglandin involved in smooth muscle contraction/relaxation and a potent inhibitor of platelet aggregation, and the conjugation of glutathione with a wide range of aryl halides and organic isothiocyanates. Also exhibits low glutathione-peroxidase activity towards cumene hydroperoxide.

Cellular Location

Cytoplasm.

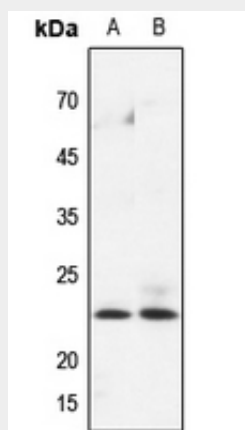
Tissue Location

Expressed in a number of megakaryocytic cell lines but not in platelets. Highly expressed in adipose tissue, macrophages and placenta. Also expressed at lower levels in lung, heart, lymph nodes, appendix, bone marrow and fetal liver

Anti-HPGDS Antibody - Protocols

Provided below are standard protocols that you may find useful for product applications.

- [Western Blot](#)
- [Blocking Peptides](#)
- [Dot Blot](#)
- [Immunohistochemistry](#)
- [Immunofluorescence](#)
- [Immunoprecipitation](#)
- [Flow Cytometry](#)
- [Cell Culture](#)

Anti-HPGDS Antibody - Images

Western blot analysis of HPGDS expression in mouse lung (A), rat lung (B) whole cell lysates.

Anti-HPGDS Antibody - Background

Rabbit polyclonal antibody to HPGDS