

**Anti-RAB30 Antibody**  
**Catalog # AP53732****Specification**

---

**Anti-RAB30 Antibody - Product Information**

Application	WB
Primary Accession	<a href="#">Q15771</a>
Reactivity	Human, Mouse, Rat
Host	Rabbit
Clonality	Polyclonal
Calculated MW	23058

**Anti-RAB30 Antibody - Additional Information****Gene ID** 27314**Other Names**

Ras-related protein Rab-30

**Target/Specificity**

Recognizes endogenous levels of RAB30 protein.

**Dilution**

WB~~1/500 - 1/1000

**Format**

Liquid in 0.42% Potassium phosphate, 0.87% Sodium chloride, pH 7.3, 30% glycerol, and 0.09% (W/V) sodium azide.

**Storage**

Store at -20 °C.Stable for 12 months from date of receipt

**Anti-RAB30 Antibody - Protein Information****Name** RAB30**Function**

The small GTPases Rab are key regulators of intracellular membrane trafficking, from the formation of transport vesicles to their fusion with membranes. Rabs cycle between an inactive GDP-bound form and an active GTP-bound form that is able to recruit to membranes different set of downstream effectors directly responsible for vesicle formation, movement, tethering and fusion (By similarity). Required for maintaining the structural integrity of the Golgi apparatus, possibly by mediating interactions with cytoplasmic scaffolding proteins.

**Cellular Location**

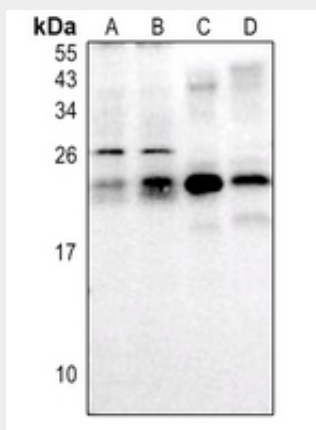
Membrane; Lipid-anchor; Cytoplasmic side. Golgi apparatus, trans- Golgi network. Cytoplasm. Golgi apparatus

## Anti-RAB30 Antibody - Protocols

Provided below are standard protocols that you may find useful for product applications.

- [Western Blot](#)
- [Blocking Peptides](#)
- [Dot Blot](#)
- [Immunohistochemistry](#)
- [Immunofluorescence](#)
- [Immunoprecipitation](#)
- [Flow Cytometry](#)
- [Cell Culture](#)

## Anti-RAB30 Antibody - Images



Western blot analysis of RAB30 expression in LO2 (A), EC9706 (B), mouse brain (C), rat kidney (D) whole cell lysates.

## Anti-RAB30 Antibody - Background

Rabbit polyclonal antibody to RAB30