

Anti-CLIP4 Antibody
Catalog # AP53735**Specification**

Anti-CLIP4 Antibody - Product Information

Application	WB
Primary Accession	P57075
Reactivity	Human, Mouse, Rat
Host	Rabbit
Clonality	Polyclonal
Calculated MW	74123

Anti-CLIP4 Antibody - Additional Information**Gene ID** 53347**Other Names**

STS2; Ubiquitin-associated and SH3 domain-containing protein A; Cbl-interacting protein 4; CLIP4; Suppressor of T-cell receptor signaling 2; STS-2; T-cell ubiquitin ligand 1; TULA-1

Target/Specificity

Recognizes endogenous levels of CLIP4 protein.

Dilution

WB~~1/500 - 1/1000

Format

Liquid in 0.42% Potassium phosphate, 0.87% Sodium chloride, pH 7.3, 30% glycerol, and 0.09% (W/V) sodium azide.

Storage

Store at -20 °C.Stable for 12 months from date of receipt

Anti-CLIP4 Antibody - Protein Information**Name** UBASH3A**Synonyms** STS2**Function**

Interferes with CBL-mediated down-regulation and degradation of receptor-type tyrosine kinases. Promotes accumulation of activated target receptors, such as T-cell receptors, EGFR and PDGFRB, on the cell surface. Exhibits negligible protein tyrosine phosphatase activity at neutral pH. May act as a dominant-negative regulator of UBASH3B- dependent dephosphorylation. May inhibit dynamin-dependent endocytic pathways by functionally sequestering dynamin via its SH3 domain.

Cellular Location

Cytoplasm. Nucleus.

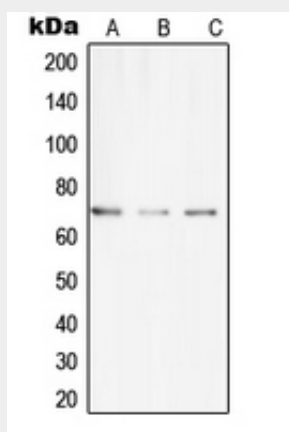
Tissue Location

Highest expression of UBASH3A in tissues belonging to the immune system, including spleen, peripheral blood leukocytes, thymus and bone marrow.

Anti-CLIP4 Antibody - Protocols

Provided below are standard protocols that you may find useful for product applications.

- [Western Blot](#)
- [Blocking Peptides](#)
- [Dot Blot](#)
- [Immunohistochemistry](#)
- [Immunofluorescence](#)
- [Immunoprecipitation](#)
- [Flow Cytometry](#)
- [Cell Culture](#)

Anti-CLIP4 Antibody - Images

Western blot analysis of CLIP4 expression in THP1 (A), SP2/O (B), H9C2 (C) whole cell lysates.

Anti-CLIP4 Antibody - Background

Rabbit polyclonal antibody to CLIP4