

Anti-SBAT1 Antibody
Catalog # AP53737**Specification**

Anti-SBAT1 Antibody - Product Information

Application	WB
Primary Accession	Q9H2J7
Reactivity	Human, Mouse, Rat
Host	Rabbit
Clonality	Polyclonal
Calculated MW	81836

Anti-SBAT1 Antibody - Additional Information**Gene ID** 55117**Other Names**

B0AT2; NTT73; SBAT1; Sodium-dependent neutral amino acid transporter B(0)AT2; Sodium- and chloride-dependent neurotransmitter transporter NTT73; Sodium-coupled branched-chain amino-acid transporter 1; Solute carrier family 6 member 15; Transporter v7-3

Target/Specificity

Recognizes endogenous levels of SBAT1 protein.

Dilution

WB~~1/500 - 1/1000

Format

Liquid in 0.42% Potassium phosphate, 0.87% Sodium chloride, pH 7.3, 30% glycerol, and 0.09% (W/V) sodium azide.

Storage

Store at -20 °C.Stable for 12 months from date of receipt

Anti-SBAT1 Antibody - Protein Information**Name** SLC6A15 ([HGNC:13621](#))**Function**

Functions as a sodium-dependent neutral amino acid transporter. Exhibits preference for the branched-chain amino acids, particularly leucine, valine and isoleucine and methionine. Can also transport low-affinity substrates such as alanine, phenylalanine, glutamine and pipecolic acid. Mediates the saturable, pH-sensitive and electrogenic cotransport of proline and sodium ions with a stoichiometry of 1:1. May have a role as transporter for neurotransmitter precursors into neurons. In contrast to other members of the neurotransmitter transporter family, does not appear to be chloride-dependent.

Cellular Location

Membrane; Multi- pass membrane protein

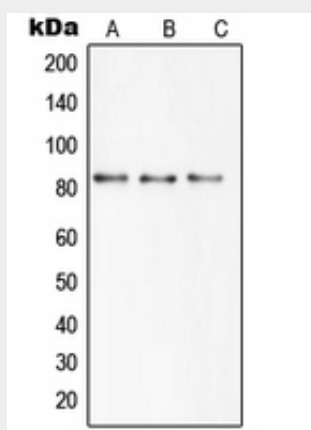
Tissue Location

Almost exclusively expressed in the brain.

Anti-SBAT1 Antibody - Protocols

Provided below are standard protocols that you may find useful for product applications.

- [Western Blot](#)
- [Blocking Peptides](#)
- [Dot Blot](#)
- [Immunohistochemistry](#)
- [Immunofluorescence](#)
- [Immunoprecipitation](#)
- [Flow Cytometry](#)
- [Cell Culture](#)

Anti-SBAT1 Antibody - Images

Western blot analysis of SBAT1 expression in HEK293T (A), mouse brain (B), rat brain (C) whole cell lysates.

Anti-SBAT1 Antibody - Background

Rabbit polyclonal antibody to SBAT1