

Anti-NBPF-pan Antibody
Catalog # AP53738**Specification**

Anti-NBPF-pan Antibody - Product Information

Application	WB
Primary Accession	Q5TAG4
Other Accession	Q6P3W6 , Q5SXJ2 , Q3BBV0 , Q3BBW0 , Q3BBV1 , Q8N660 , Q5TI25
Reactivity	Human, Mouse, Rat
Host	Rabbit
Clonality	Polyclonal
Calculated MW	167689

Anti-NBPF-pan Antibody - Additional Information**Gene ID** 149013**Other Names**

NBPF12; COAS1; KIAA1245; Neuroblastoma breakpoint family member 12; Chromosome 1 amplified sequence 1; NBPF10; Neuroblastoma breakpoint family member 10; NBPF16; Neuroblastoma breakpoint family member 16; NBPF1; KIAA1693; Neuroblastoma breakpoint family member 1; NBPF9; Neuroblastoma breakpoint family member 9; NBPF20; Neuroblastoma breakpoint family member 20; NBPF15; Neuroblastoma breakpoint family member 15; NBPF14; Neuroblastoma breakpoint family member 14

Target/Specificity

Recognizes endogenous levels of NBPF-pan protein.

Dilution

WB~~1/500 - 1/1000

Format

Liquid in 0.42% Potassium phosphate, 0.87% Sodium chloride, pH 7.3, 30% glycerol, and 0.09% (W/V) sodium azide.

Storage

Store at -20 °C.Stable for 12 months from date of receipt

Anti-NBPF-pan Antibody - Protein Information**Name** NBPF12**Synonyms** COAS1, KIAA1245**Cellular Location**

Cytoplasm.

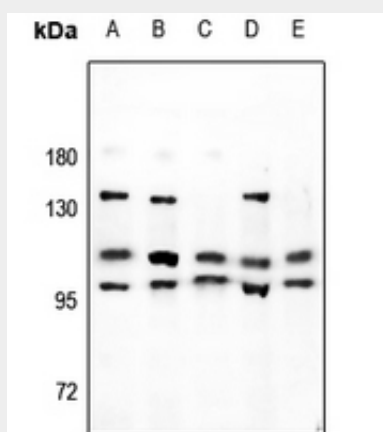
Tissue Location

Widely expressed with highest levels in brain, ovary, mammary gland, skin and adipose tissue. Also expressed in testis. Detected in a number of tumors including osteosarcoma, mammary carcinoma and hepatocellular carcinoma.

Anti-NBPF-pan Antibody - Protocols

Provided below are standard protocols that you may find useful for product applications.

- [Western Blot](#)
- [Blocking Peptides](#)
- [Dot Blot](#)
- [Immunohistochemistry](#)
- [Immunofluorescence](#)
- [Immunoprecipitation](#)
- [Flow Cytometry](#)
- [Cell Culture](#)

Anti-NBPF-pan Antibody - Images

Western blot analysis of NBPF-pan expression in MCF7 (A), HepG2 (B), U87MG (C), rat brain (D), mouse brain (E) whole cell lysates.

Anti-NBPF-pan Antibody - Background

Rabbit polyclonal antibody to NBPF-pan